

Milestone Systems

Search and export video evidence in XProtect® Smart Client
2024 R2

Quick guide



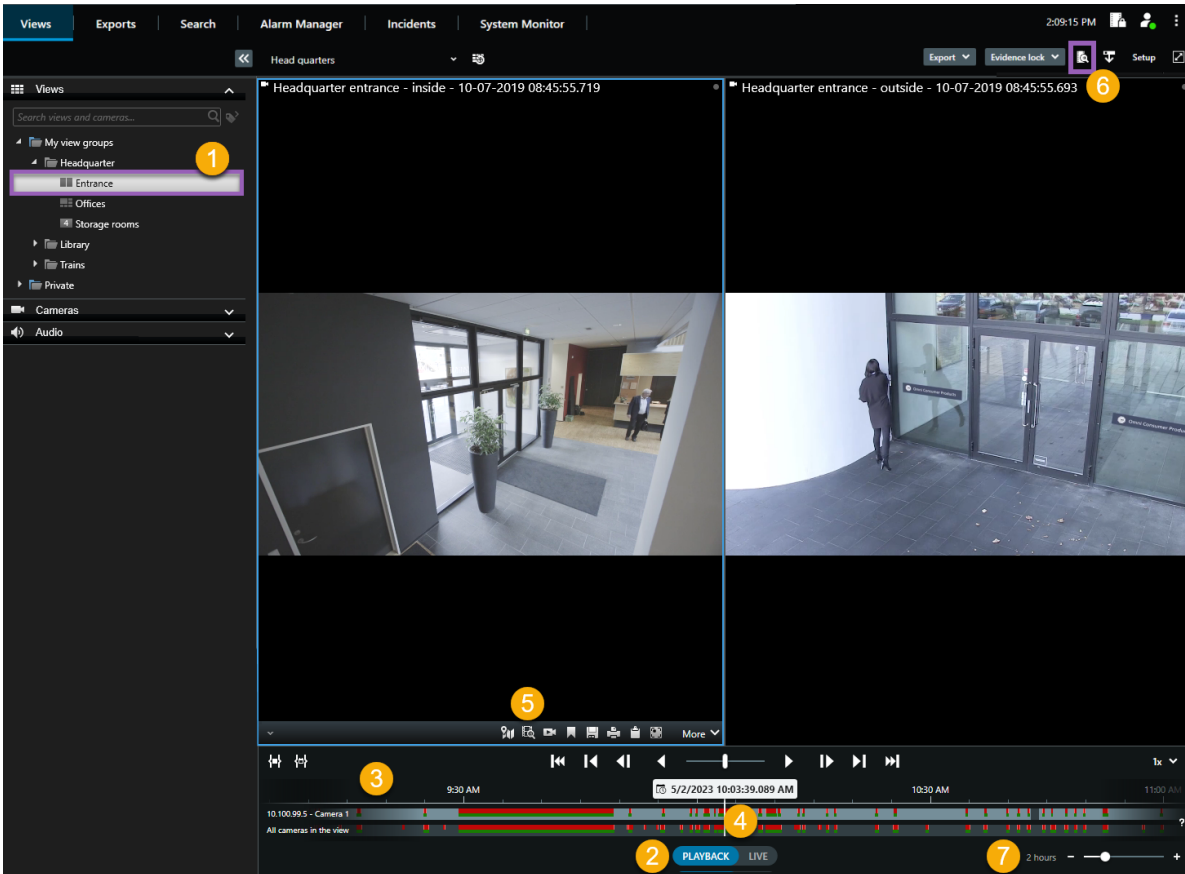
Introduction

After an incident occurs, it is important that you can investigate the video to determine what happened, and when it happened. Searching for an exact moment in hours of recorded video can be time consuming. However, the search and investigation tools available in XProtect Smart Client can help speed up the process, so that you can quickly and accurately find and export the relevant video.

This document describes how to investigate and search for recorded video to find an incident, and how to export the recorded video.

Investigate recordings

If you know which cameras recorded the incident, you can switch directly to playback mode to investigate what happened and when.



To investigate recordings:

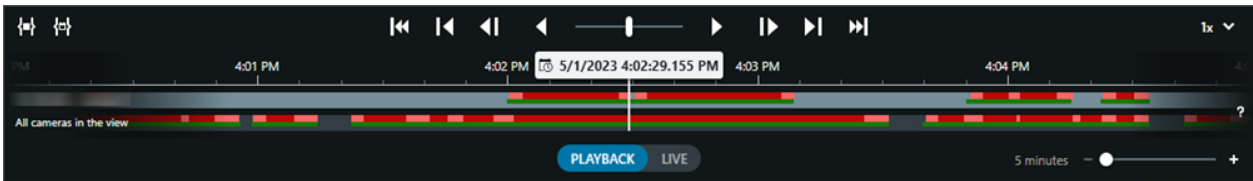
1. Open the view that contains the cameras of interest **1**.
2. Switch to playback mode **2**.
3. Use one of these tools:
 - A timeline track that you can drag to browse the video recordings **3**.
 - A **Go to time** feature where you can enter a specific moment in time **4**.
 - A search feature that opens the **Search** window from a specific camera **5**, or from all the cameras in the view **6**.
4. To adjust the span of time that you are viewing, drag the time slider to the left or right **7**.

The main timeline

The main timeline displays an overview of time periods with recordings from cameras and other devices in your current view. The main timeline is available on the views tabs and has various controls you can use to navigate your recordings during investigations or to select recording sequences for export, protection with evidence locks, addition of bookmarks, or other.

There are two timeline tracks:

- The upper timeline track shows the recording periods of the selected camera.
- The lower timeline track shows the recording periods of all the cameras in the view, including the selected camera.



Colors on the timeline tracks

- Light-red indicates recordings
- Red indicates recordings with motion
- Light green indicates recordings with outgoing audio
- Green indicates recordings with incoming audio

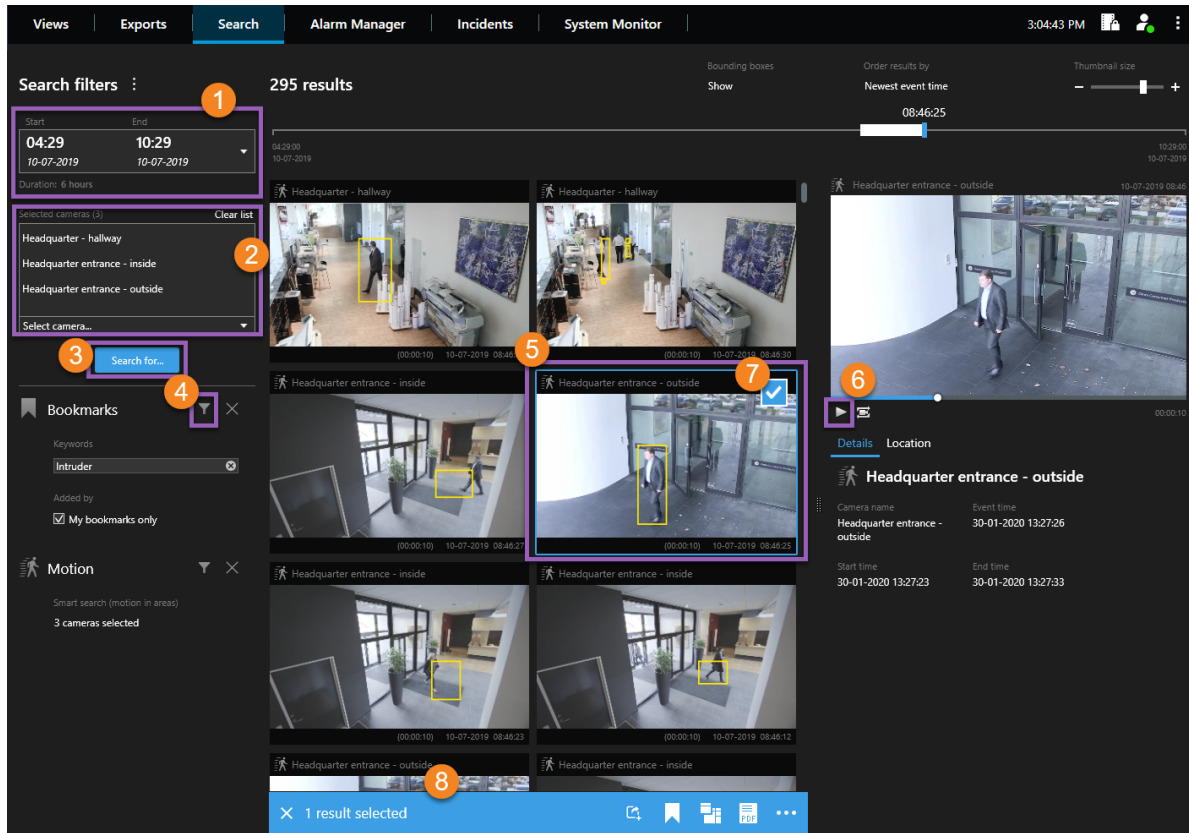
Searching

On the **Search** tab, you can make advanced searches across multiple cameras to find and investigate an incident. This is useful, for example, if:


- There are many cameras in your system, and you are uncertain as to which cameras recorded the incident
- You want to find all video sequences within a certain timespan, for example if the cameras record only occasionally
- You want to find video sequences with motion, for example, to identify when a specific package was removed from a shelf
- You want to investigate or revisit bookmarked incidents
- You want to find video sequences associated with alarms, for example alarms in a certain state that are assigned to a specific operator
- You want to find video sequences associated with events, for example events that come from a specific source or server
- You want to find video sequences that include people, for example people of a certain age or height
- You want to find video sequences that include vehicles, for example a truck with a specific license plate number. Searching for vehicles is also available if you have XProtect® LPR installed in your system.
- You want to find video sequences recorded at a certain location

Run a search

The search workspace is available on the **Search** tab. To configure and run a search, follow these steps:



1. Select a timespan, or define your own **Custom interval** 1.
2. Add the cameras by using the search function or selecting the cameras in the tree structure 2.

 To add all the cameras within a view, click the name of the view.

3. Select the search categories 3. You can only use multiple search categories if you are using XProtect Corporate or XProtect Expert.
4. Apply filters to narrow down the search results 4.
5. To preview video from a search result, select the search result 5 and click **Play forward** in the preview area 6. To view the search result in full-screen mode, double-click the search result.
6. To make the search result actionable, for example to export or bookmark the video, hover over the

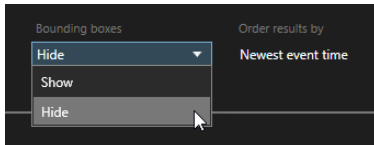
search result and select the blue check box that appears **7**. The blue action bar appears **8**.




To select all your search results at one time, click any of them and press **Ctrl+A**.

Bounding boxes

The yellow bounding boxes help you identify objects or motion. To turn them on or off, select **Show** or **Hide** in the **Bounding boxes** list.



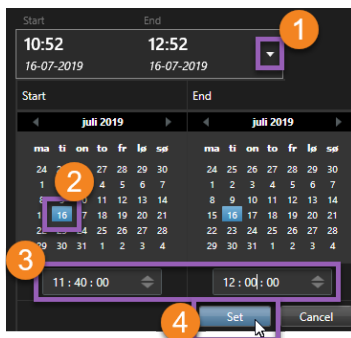
Example - search for motion



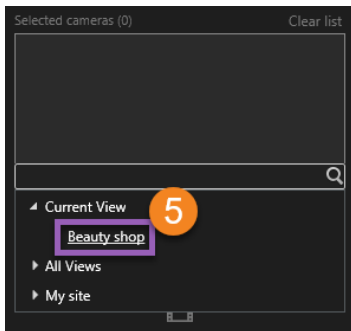
"I work as a store manager in a cosmetics store. I want to prove that an item was stolen and identify who stole it."

In this example, we will search for motion only in the area that the item was stolen from. The incident occurred on July 16 between 11:40 and 12:00.

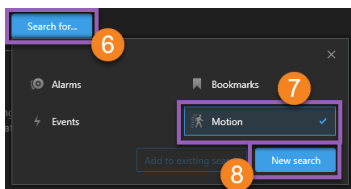
1. When you set the timespan **1**, select **Custom interval**. The date and time picker is displayed.



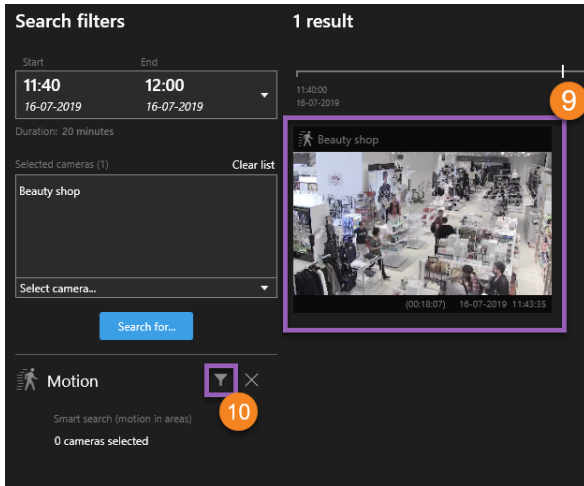
2. Select the date **2**, enter the start and end time **3**, and click **Set** **4**.
3. Open the list of cameras and select the camera overlooking the shelf that the item was stolen from **5**.



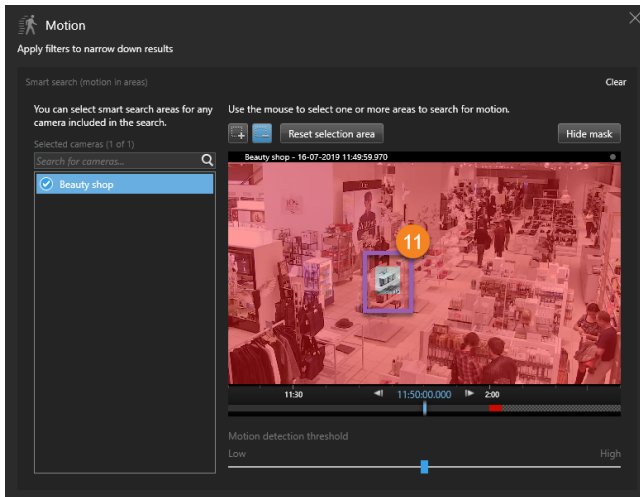
4. Click **Search for** **6** and select **Motion** **7**.



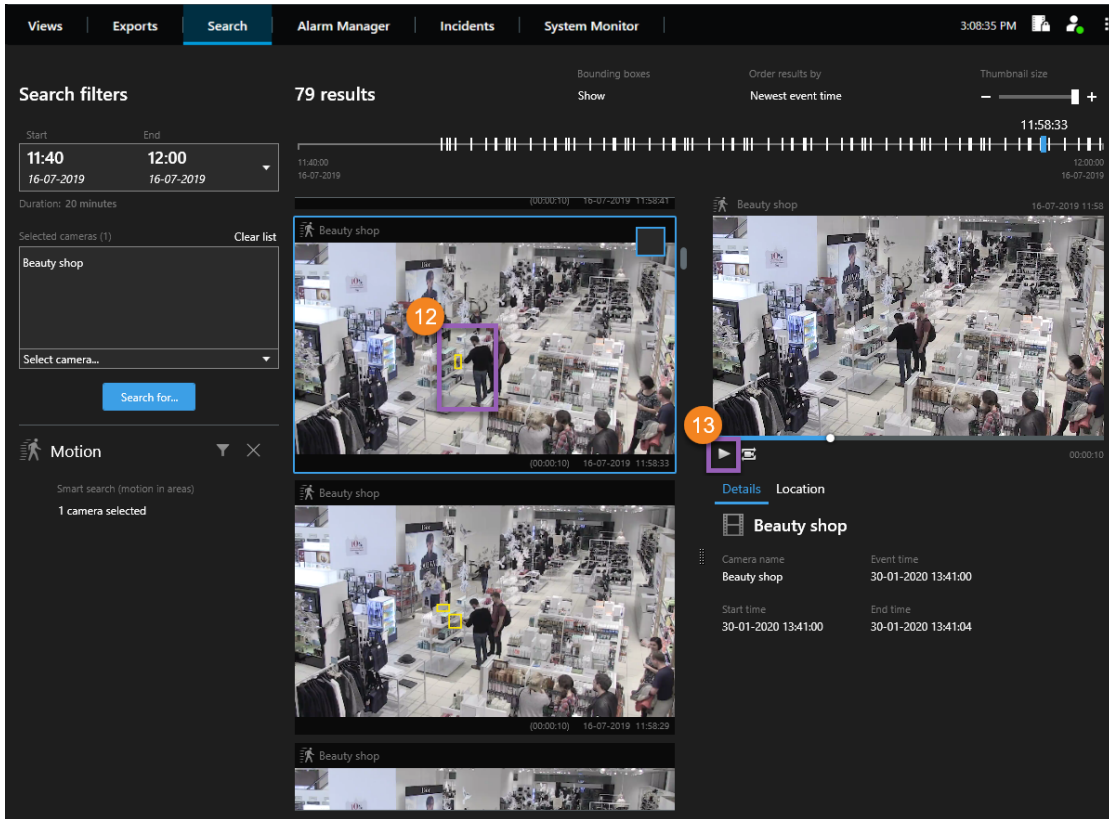
- 5. Click **New search** **8**. At this point, the search provides one result **9**.



- 6. Specify where to search for motion **10**.



7. In the window that appears, click and drag to unmask the area where the stolen item was located **11**. Additional search results appear. Click anywhere outside the window to close it.



8. The yellow bounding boxes in the thumbnails help you identify the search results that can be used as evidence **12**.
9. To preview video, select the search result and click **Play forward** **13**, or double-click the search result to view it in full-screen.
10. For information about how to export the video, see [Export the video on page 11](#).

Export the video

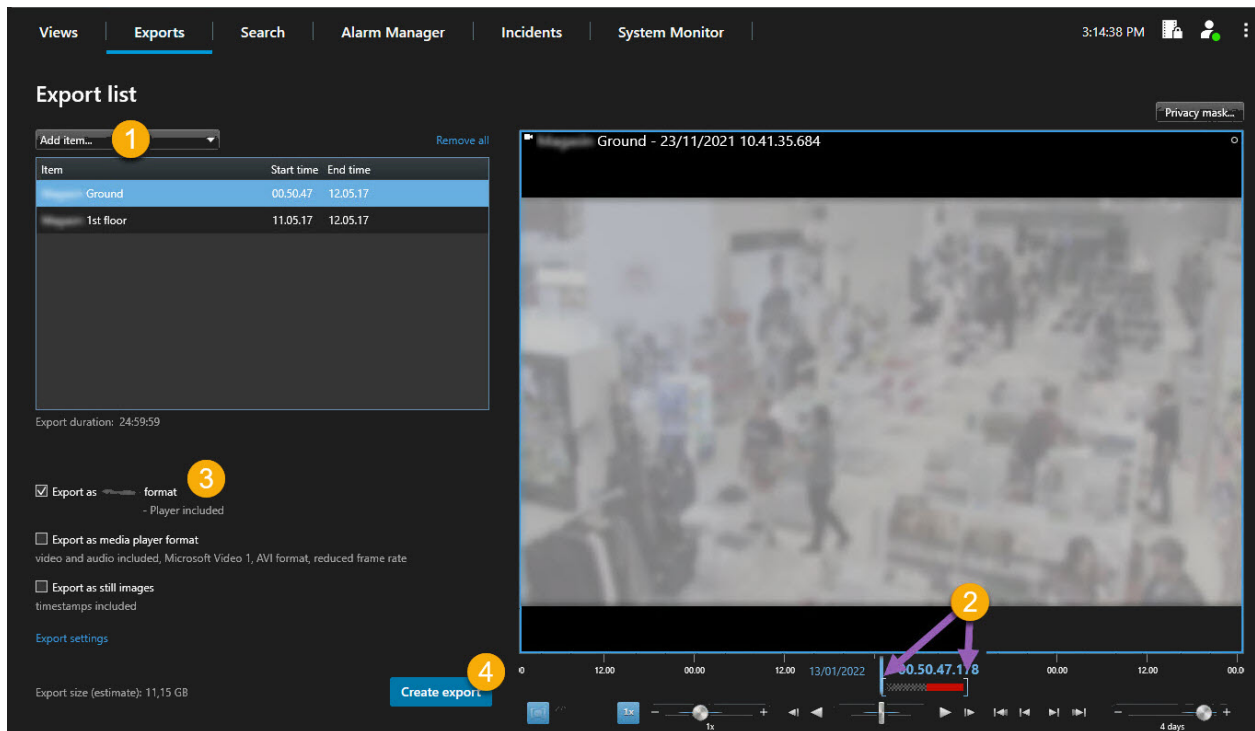
To export video evidence:

1. Add the video sequences that you want to export to the **Exports** tab > **Export list**.
2. Create the export.

Add video sequences to the Export list

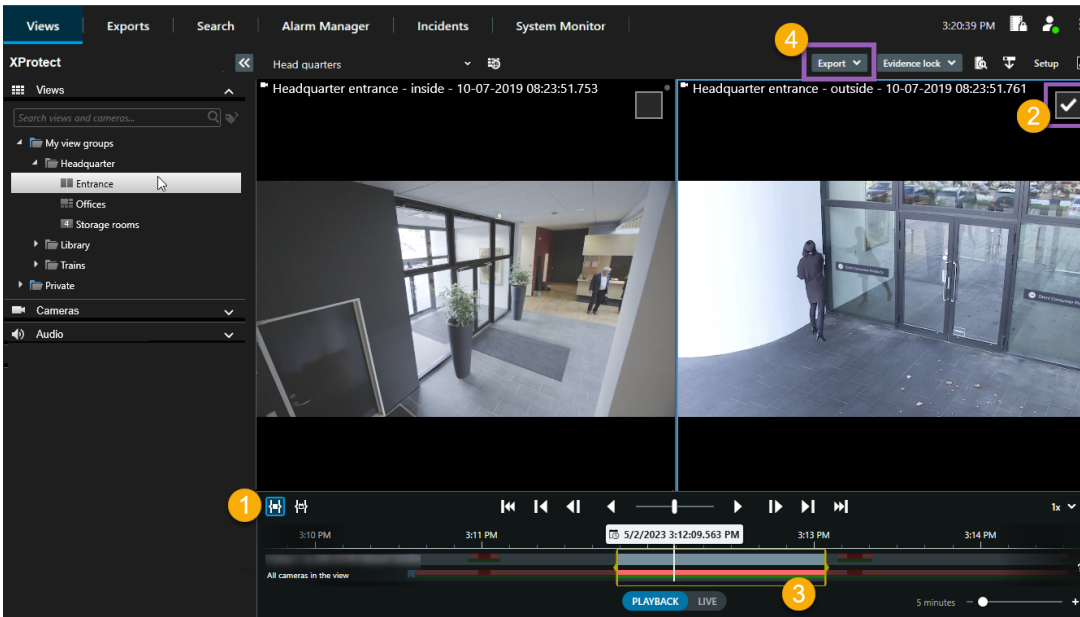
You can add video sequences to the **Export list** on the:

Exports tab



1. Add views and cameras to the **Export list**.
2. For each view and camera on the export list, drag the time selection brackets to select a start and end time.
3. Select at least one format for the export. See [Export formats on page 15](#).
4. Select **Export**. See [Create the export on page 14](#).

Playback mode

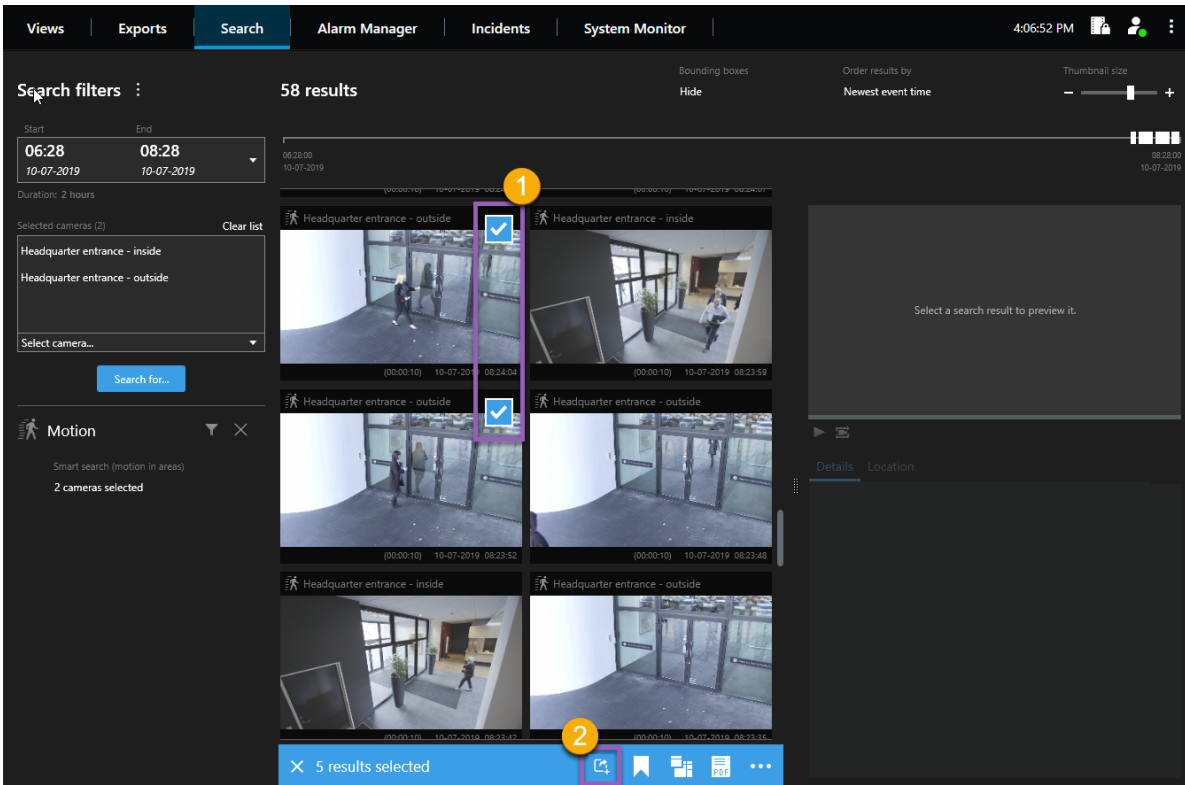


1. Select to set a start and end time of the export on the timeline tracks **1**.
2. Select the cameras that you want to include in the export **2**.
3. Drag the time selection brackets to select a start and end time for the export **3**.
4. Click **Export** **4** > **Export** to add the selected video sequences to the **Export list** and to move to the **Exports** tab. On the **Exports** tab:
 1. Select at least one format for the export. See [Export formats on page 15](#).
 2. Select **Export**. See [Create the export on page 14](#).

OR:

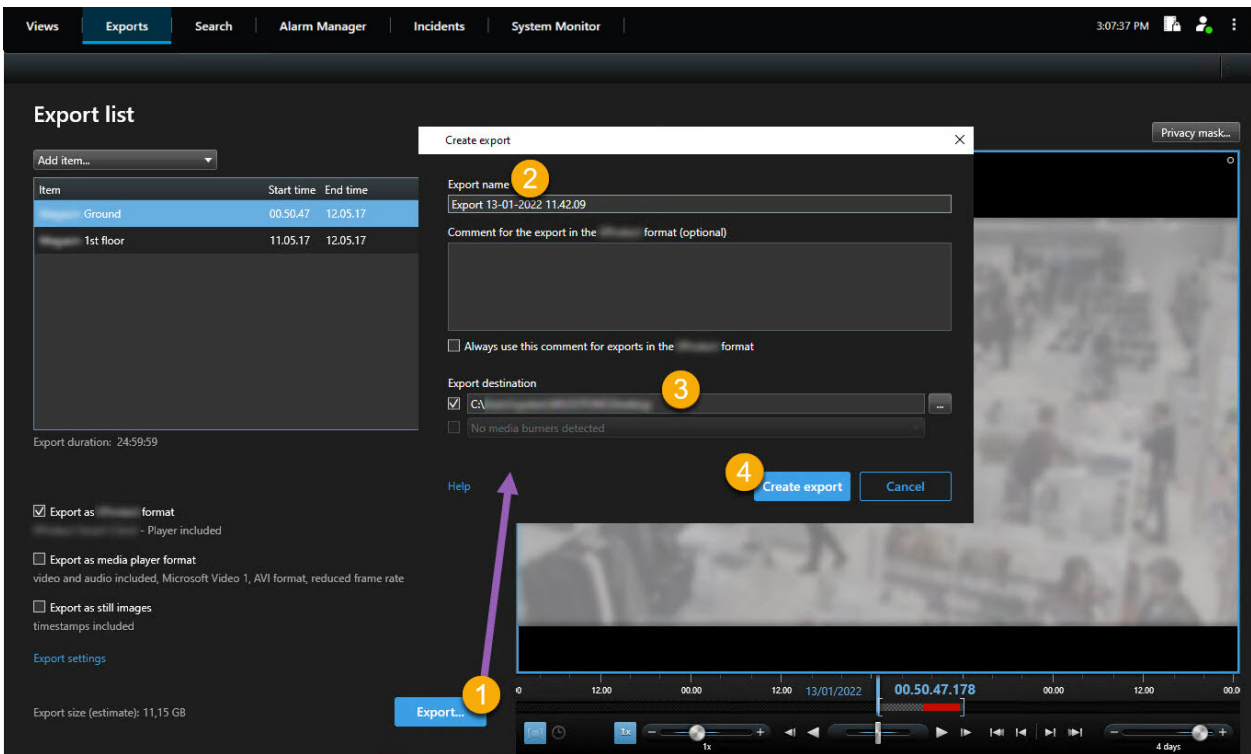
- Click **Export** > **Add to export list** to add the selected video sequences to the **Export list** and to stay in playback mode. On the **Exports** tab:
1. Select at least one format for the export. See [Export formats on page 15](#).
 2. Select **Export**. See [Create the export on page 14](#).

Search tab



1. For each search result that you want to export, hover over it and select the blue check box that appears **1**.
2. In the action bar, select the **Add to export list** button **2** to add the selected video sequences to the **Export list**. On the **Exports** tab:
 1. Select at least one format for the export. See [Export formats on page 15](#).
 2. Select **Export**. See [Create the export on page 14](#).

Create the export



1. Click **Create export**. The **Create export** window opens.
2. Enter a name for the export file.
3. Specify the export destination.
4. Click **Export**.

To access the export after it is created:



1. Click **Export details** in the upper-right corner.
2. Click the **Export location** link.

Export formats



Some export formats may be unavailable to you because of limited user permissions. In that case, please contact your system administrator.

Format	Description
XProtect format	<p>Export video from multiple cameras at the same time, and with digital zoom capability.</p> <p>This option requires the following:</p> <ul style="list-style-type: none"> • You must use XProtect Smart Client – Player to view the video. It is included in the export and does not require any configuration • You must be running a Windows operating system on your computer to view the video
Media player format—Individual files	<p>Export video from multiple cameras as individual video files that you can view by using a standard media player for example, Windows Media Player.</p> <p>This option allows you to select one of these formats:</p> <ul style="list-style-type: none"> • AVI format - with or without audio • MKV format - with or without audio
Media player format—Combined file	<p>Export video from multiple cameras as a combined video file that you can view by using a standard media player, for example, Windows Media Player.</p> <p>This option allows you to select one of these formats:</p> <ul style="list-style-type: none"> • MKV format - with or without audio • MP4 format - with or without audio
Still images	<p>Export still images.</p>

About Milestone

Milestone Systems is a leading provider of open platform video management software; technology that helps the world see how to ensure safety, protect assets and increase business efficiency. Milestone Systems enables an open platform community that drives collaboration and innovation in the development and use of network video technology, with reliable and scalable solutions that are proven in more than 150,000 sites worldwide. Founded in 1998, Milestone Systems is a stand-alone company in the Canon Group. For more information, visit <https://www.milestonesys.com/>.