

MAKE THE  
WORLD SEE

# Milestone Systems

---

XProtect® DLNA Server

Administrator manual

The documentation for this product is no longer maintained



# Contents

<b>Copyright, trademarks, and disclaimer</b> .....	<b>3</b>
<b>Overview</b> .....	<b>4</b>
XProtect DLNA Server (explained) .....	4
XProtect DLNA Server system flow .....	4
<b>Licensing</b> .....	<b>6</b>
DLNA licensing .....	6
<b>Requirements and considerations</b> .....	<b>7</b>
Before you install XProtect DLNA Server .....	7
XProtect DLNA Server requirements .....	7
Camera settings .....	7
What's installed .....	7
<b>Installation</b> .....	<b>9</b>
Install XProtect DLNA Server .....	9
Typical installation .....	9
Custom installation .....	10
<b>Configuration</b> .....	<b>11</b>
Configuring XProtect DLNA Server .....	11
Configure settings for a DLNA server .....	11
Add channels .....	11
Managing XProtect DLNA Server .....	12
Status of the XProtect DLNA Server service .....	12
Change management server address .....	13
Edit port numbers .....	13
<b>Operation</b> .....	<b>15</b>
Using DLNA certified device to view video streams .....	15

## Copyright, trademarks, and disclaimer

Copyright © 2024 Milestone Systems A/S

### Trademarks

XProtect is a registered trademark of Milestone Systems A/S.

Microsoft and Windows are registered trademarks of Microsoft Corporation. App Store is a service mark of Apple Inc. Android is a trademark of Google Inc.

All other trademarks mentioned in this document are trademarks of their respective owners.

### Disclaimer

This text is intended for general information purposes only, and due care has been taken in its preparation.

Any risk arising from the use of this information rests with the recipient, and nothing herein should be construed as constituting any kind of warranty.

Milestone Systems A/S reserves the right to make adjustments without prior notification.

All names of people and organizations used in the examples in this text are fictitious. Any resemblance to any actual organization or person, living or dead, is purely coincidental and unintended.

This product may make use of third-party software for which specific terms and conditions may apply. When that is the case, you can find more information in the file `3rd_party_software_terms_and_conditions.txt` located in your Milestone system installation folder.

## Overview

### XProtect DLNA Server (explained)



As of 2023 R2, XProtect DLNA Server is no longer supported by Milestone.

DLNA (Digital Living Network Alliance) is a standard for connecting multimedia devices. Electronic manufacturers get their products DLNA certified to ensure interoperability between different vendors and devices and thereby enable them to distribute video content.

Public displays and TVs are often DLNA certified and connected to a network. They are able to scan the network for media content, connect to the device, and request a media stream to their built-in media player. XProtect DLNA Server can be discovered by certain DLNA certified devices and deliver live video streams from selected cameras to DLNA certified devices with a media player.



The DLNA devices have a live video delay of 1-10 seconds. This is caused by different buffer sizes in the devices.

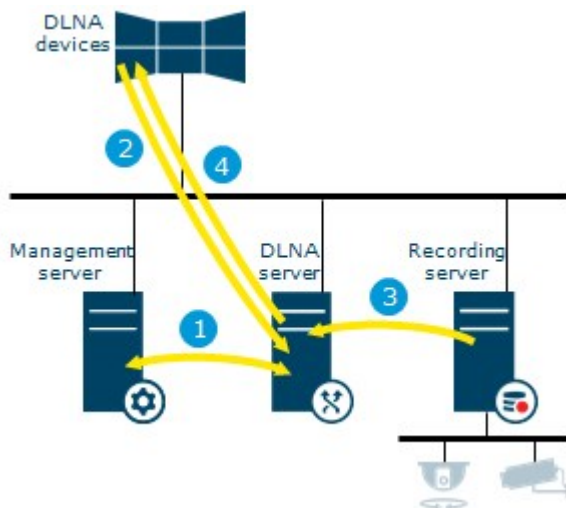
XProtect DLNA Server must be connected to the same network as the XProtect system and the DLNA device must be connected to the same network as XProtect DLNA Server.

### XProtect DLNA Server system flow

The XProtect DLNA Server is comprised of the following components:

- XProtect DLNA Server
- XProtect DLNA Server 64-bit admin plug-in for the Management Client

The following illustration shows a high-level view of the interoperability between a DLNA device and XProtect DLNA Server in the XProtect system.



1. During start up of the XProtect DLNA Server service, the XProtect DLNA Server connects to the management server to authorize itself with the provided credentials. After authorization, the XProtect DLNA Server starts and is ready to send H.264 video streams from the cameras to the DLNA devices.
2. A DLNA device connects to the XProtect system via the XProtect DLNA Server and requests a live camera video stream. To do this, the DLNA device needs the IP address or domain name (domain/host name) of the server where XProtect DLNA Server is installed, and the DLNA port number. This is done automatically by UPnP protocol.
3. XProtect DLNA Server retrieves the requested camera video stream from the recording server.
4. XProtect DLNA Server sends the live video stream from the requested camera via HTTP streaming to the DLNA device.



Only H.264 encoded camera streams is supported. If a camera supports multiple streams, only the default stream is sent.

## Licensing

### DLNA licensing

XProtect DLNA Server does not require additional licenses. You can download and install the software for free from the management server's administrative installation web page.

## Requirements and considerations

### Before you install XProtect DLNA Server

When you install XProtect DLNA Server, you install a server and a plug-in for the Management Client. These components enables you to add DLNA channels and provide video to DLNA devices.

You can install and add multiple DLNA servers to your XProtect system. Multiple DLNA devices are able to connect to each DLNA server, so this increases the load on the network, and can impact performance. To reduce the overall use of network resources on the computer that runs the management server, install XProtect DLNA Server on a separate computer.



Installation requires a restart of Event Server service and Management Client

Milestone recommends that you go through the preparation described in the next sections, before you start the actual installation.

### XProtect DLNA Server requirements

The computer where you want to install the XProtect DLNA Server component has these requirements:

- Connected to the same network as the XProtect system
- Access to the management server
- Microsoft® .NET Framework 4.7 or higher installed

For information about the system requirements for the various VMS applications and system components, go to the Milestone website (<https://www.milestonesys.com/systemrequirements/>).

### Camera settings

Verify the recommended camera settings in the Management Client:

- Frames per second: **25** (or more)
- Maximum frames between keyframes: **25** (same value as frames per second)
- Resolution: **1920x1080**
- Bit rate control mode: **Constant bit rate**

### What's installed

During installation, the following components are installed:

- XProtect DLNA Server Admin Plug-in
- XProtect DLNA Server which includes:
  - XProtect DLNA Server Manager that is running and accessible from the notification area on the server with XProtect DLNA Server installed
  - XProtect DLNA Server service

Installation also does the following:

- Registers and starts the XProtect DLNA Server service
- Starts the X XProtect DLNA Server Manager, which is available in the Windows notification area on the server where the XProtect DLNA Server is installed



The plug-in is available on the **Servers** node in the Management Client. This happens automatically when you use a **Typical** installation method. If you use a **Custom** installation method, you can install it at a later stage of the installation.



## Installation

### Install XProtect DLNA Server

To access the installation web page:

1. Log into the computer where you want to install the XProtect DLNA Server and open an Internet browser.
2. Enter the following URL in your browser: *http://[management server address]/installation/admin*  
[management server address] is the IP address or host name of the management server.
3. Select **All Languages** below the **DLNA Server installer**.
4. Click **Save** to save the installer somewhere appropriately and run it from here or click **Run** to run it directly from the web page.

Run the installer:

1. Accept all warnings and select the language you want to use. Click **Continue**.
2. Read and accept the license agreement. Click **Continue**.
3. Select the installation type, as follows:
  - In a single-computer system select **Typical**
  - In a distributed system select **Custom**

### Typical installation

1. To install all XProtect DLNA Server components on one computer, and apply default settings, click **Typical**.
  - Verify that the login as either **Network Service** or a domain user account with **User name** and **Password** is correct
  - Click **Continue**



To change or edit the service account credentials at a later stage, you will have to reinstall XProtect DLNA Server.

2. Specify the URL or IP address, and the port number of the primary management server. The default port is 80. If you omit the port number, the system will use port 80. Then, click **Continue**.
3. Select the file location and the product language, and then click **Install**.  
When the installation is complete, a list of successfully installed components appears. Click **Close**.
4. Restart Event Server service and then the Management Client.

## Custom installation

1. To install XProtect DLNA Server components on separate computers, click **Custom**.
2. To install the server, select the **XProtect DLNA Server** checkbox, and then click **Continue**.
3. Establish a connection to the management server by specifying the following:
  - Verify that the login as either **Network Service** or a domain user account with **User name** and **Password** is correct. Then click **Continue**



To change or edit the service account credentials at a later stage, you will have to reinstall XProtect DLNA Server.

- Specify the URL or IP address, and the port number of the primary management server, and the connection ports for communication with the XProtect DLNA Server:
  - The default port of the management server is 80. If you omit the port number, the system will use port 80
  - The default port numbers are: DLNA video **9200** and DLNA device **9100**

Click **Continue**.

4. Select the file location and the product language, and then click **Install**.

When the installation is complete, a list of successfully installed components appears.

5. Click **Close**, and then install the XProtect DLNA Server plug-in on the computer where the Management Client is installed. To install the plug-in, run the installer again on that computer, select **Custom** and select the plug-in.
6. Restart the Event Server service and then the Management Client.

## Configuration

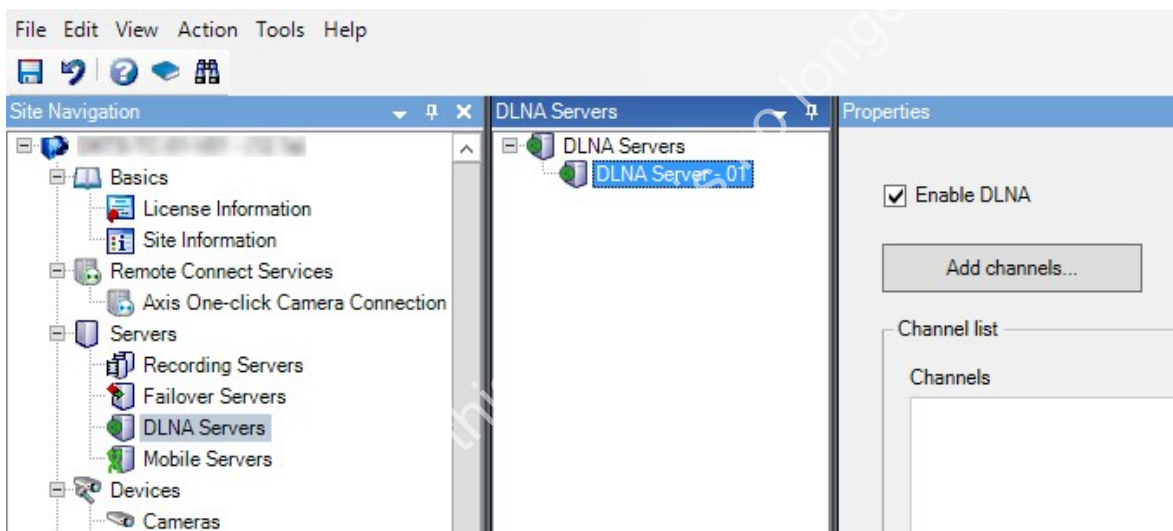
### Configuring XProtect DLNA Server

After you installed XProtect DLNA Server, the XProtect DLNA Server service is running and the DLNA Server Manager tray icon in the notification area turns green. The next step is to make cameras available for XProtect DLNA Server.

#### Configure settings for a DLNA server

To provide a DLNA device access to your XProtect VMS, follow these steps:

1. Open the Management Client.
2. Expand **Servers**, select **DLNA Servers**, and then select the DLNA server you just added.




3. To rename the server right-click the DLNA Server and select **Rename**. The name you enter is the name that DLNA devices discover during a scan for media available content.
4. On the **Properties** tab, the **Enable DLNA** check box is selected by default. Clear the check box if you want to disable DLNA availability.


#### Add channels

The DLNA devices discovers the channels defined in your XProtect system. There are different types of DLNA channels you can assign a camera to:

- Single camera: One camera per channel
- Carousel: Multiple cameras per channel. The channel switches between the selected cameras in a defined time interval

- Rule-based: One or multiple cameras per channel. Cameras are set to or removed from the rule-based channel based on events

 To add a rule-based channel, you must install the DLNA Server on the same machine where the Event Server is installed. After the installation is complete, you must restart the Event Server.

 After creating the channel, you need to create new rules in **Rules** to show cameras on this channel.

To select the cameras available for DLNA devices, follow these steps:

1. Click the **Add channels** button.
2. Select a channel type.
3. Click the server and camera groups to expand them and select the cameras you want.

To adjust the duration and order of each camera in a carousel channel:

1. Select a camera and adjust the time.
2. Use the arrows in the top of the list to change the order of the carousel.

To set the duration of the camera assignment to a rule-based channels:

1. Select the **Remove camera from channel after** check box.
2. Set the time.

The added channel types appear in the **Channel list**.

## Managing XProtect DLNA Server

After you have configured XProtect DLNA Server, you can monitor the service and change configuration settings in several ways.

### Status of the XProtect DLNA Server service

To view the status of the XProtect DLNA Server service, follow these steps.

On the computer where the XProtect DLNA Server is installed, look in the notification area. The XProtect DLNA Server Manager icon indicates the status of the XProtect DLNA Server service with the following colors:



- Green: Running
- Yellow: Starting or stopping
- Red: Stopped

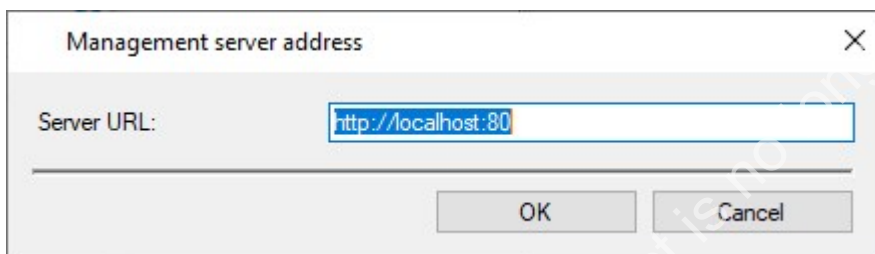
If it is stopped, right-click the icon and select **Start XProtect DLNA Server**.

If you change the IP address or the port numbers of the management server, you must update this information for XProtect DLNA Server. Port numbers for the XProtect DLNA Server can also be changed.


## Change management server address

To change the management server address, follow these steps:

1. On the computer where the XProtect DLNA Server service is installed, right-click the XProtect DLNA Server Manager tray icon and select **Management server address**.



2. Specify the new information and click **OK**.

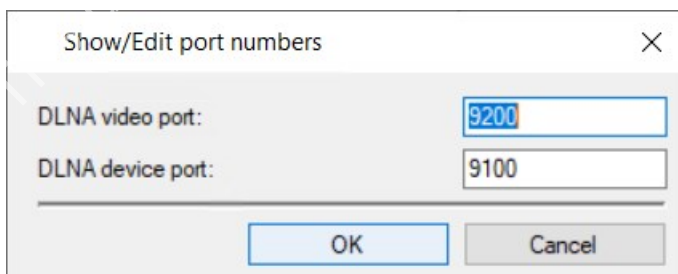
 You must use the domain name or the IP address of the server where the management server is installed.

The XProtect DLNA Server service restarts and the tray icon turns green.

## Edit port numbers

To change the XProtect DLNA Server port numbers, follow these steps:

1. On the computer where the XProtect DLNA Server service is installed, right-click the XProtect DLNA Server Manager tray icon, and select **Show/edit port numbers**.



2. Specify the new information, and then click **OK**.

The XProtect DLNA Server service restarts and the tray icon turns green.

## Operation

### Using DLNA certified device to view video streams

To start watching live video from your XProtect system on your public displays or TV, follow these steps:

1. Make sure your device is DLNA certified and connected to the network with XProtect DLNA Server.
2. Scan the network and connect to XProtect DLNA Server when it has been discovered.

A list of the different channels appears.

3. Connect to the channel that you want to show video from.
4. Verify that the selected channel shows video.



[helpfeedback@milestone.dk](mailto:helpfeedback@milestone.dk)

#### About Milestone

Milestone Systems is a leading provider of open platform video management software; technology that helps the world see how to ensure safety, protect assets and increase business efficiency. Milestone Systems enables an open platform community that drives collaboration and innovation in the development and use of network video technology, with reliable and scalable solutions that are proven in more than 150,000 sites worldwide. Founded in 1998, Milestone Systems is a stand-alone company in the Canon Group. For more information, visit <https://www.milestonesys.com/>.

