

Powerful situation management

- with cost-efficient advanced video wall solution

XProtect Smart Wall is a video wall solution that provides visual coordination and decision support to operators working in response centers and control rooms. The tight integration with the XProtect® Smart Client makes XProtect Smart Wall an efficient collaborative canvas for gaining situational overview, assessing incidents and coordinating response activities. It supports any number or combination of monitors and runs on standard servers and displays, enabling flexible and cost-efficient installations.

Operating large and high-security installations not only put high demands on individual operators' ability to focus on important matters, it also requires efficient collaboration between staff when assessing and responding to incidents. XProtect Smart Wall is a flexible video wall solution that helps optimize surveillance operations among staff within an operation center and across different security organizations at different physical locations.



XProtect Smart Wall enables operators with different functional roles to quickly detect potential incidents, accurately assess the situation, and coordinate responses efficiently

Efficient decision and collaboration canvas

XProtect Smart Wall is a versatile video wall solution capable of displaying a wide array of different types of content, supporting all primary surveillance processes in a control room:

- Real-time monitoring
- Incident handling
- Collaborative investigation

Key benefits

- Flexible and versatile video wall application
- Improve decision making
- Coordinate action responses
- Reduce response time in critical situations
- Increase operational efficiency
- Cost-efficient solution that is easy to deploy

Key features

- Supports a wide set of different content, incl. including cameras, maps, still images and alarms
- Supports unlimited number of video walls and monitors
- Virtual monitor definitions enable easy sharing and mirroring of content across different video walls
- Preset definitions offer dynamic and adaptable control of content / layout
- Black-screen monitoring
- Control subject to user rights
- Intuitive manual sharing of content via simple drag-and-drop operations
- Playback mode for collaborative investigation
- Automatic flexible control of content via the rule engine
- Runs on standard off-the-shelf computers & displays
- Supports GPU-based hardware accelerated video decoding

Providing situational overview

XProtect Smart Wall provides important support to control room operators in their daily surveillance operation. Supporting a wide range of different content, the Smart Wall canvas can be optimized for the specific operational condition.

Content like live feeds from *cameras*, *camera carousels* and *maps* gives operators a complete overview and situational awareness in the daily real-time monitoring activities. The Smart Wall can also display *HTML content*, as a complementary information and decision support. The support for *HTML content* can be used for a broad variety of applications, including news feeds, status information or instructions. Predefined *text messages* can also be displayed on the Smart Wall based on specific events and time schedules. These messages can be used for announcements and to bring operators' attention to critical matters or instructions.

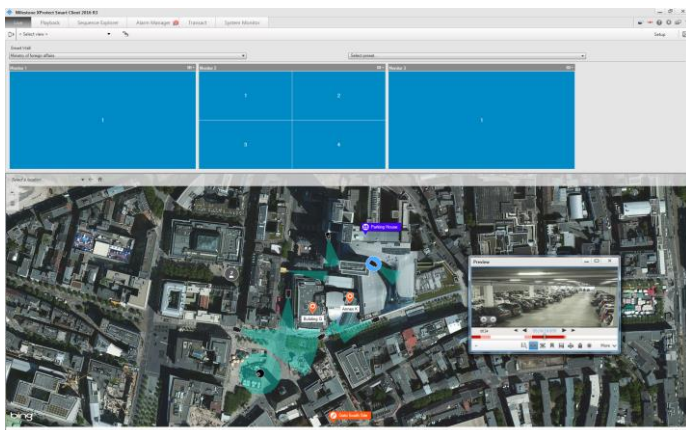
Handling incidents efficiently

In the event of truly critical incidents operators only have limited time to assess the nature and extent of the incident and determine the appropriate response. When every second counts, it is of utmost importance that decision tools and information systems are easy to use and enable efficient collaboration.

XProtect Smart Wall is the perfect decision support tool for fast assessment and response coordination. To support the assessment of a given situation, video recordings of individual incidents can be played back repeatedly until it has been fully analyzed. Likewise, can maps showing the incident location, enlarged video snapshots and still images of persons of interest be sent to the Smart Wall for detailed collective analysis.

Intuitive manual control

XProtect Smart Wall is an integral part of XProtect Corporate and XProtect Expert VMS solutions which makes it easy for operators to share cameras and other content with staff. This is done by sending the content to the video wall directly from the XProtect Smart Client with just a few mouse clicks or simple drag-and-drop operations.



The Smart Wall control (upper part) allows operators to send content to a specific Smart Wall and position through simple drag-and-drop operations

Supported content

XProtect Smart Wall supports a wide arrange of different types of content:

- Cameras
- Maps/Smart Maps
- HTML content
- Text messages
- Camera hotspots and carousels
- Alarms, including alarm list, individual alarms with associated maps, cameras and instructions
- Still images
- Bookmarks
- System Monitor dashboard

Black-screen monitoring

Black-screen monitoring is an operation mode that builds on the philosophy that operators only shall be presented with video when a situation requires manual attention. Hence, the video wall will not display any cameras (black) during normal operation. In the event of an incident, cameras covering the specific area are displayed on the Smart Wall automatically.

Once the incident has been resolved the cameras are automatically cleared from the Smart Wall again.

Black screen monitoring has the advantage to guide the operators' attention to critical matters, while extending the attention span.

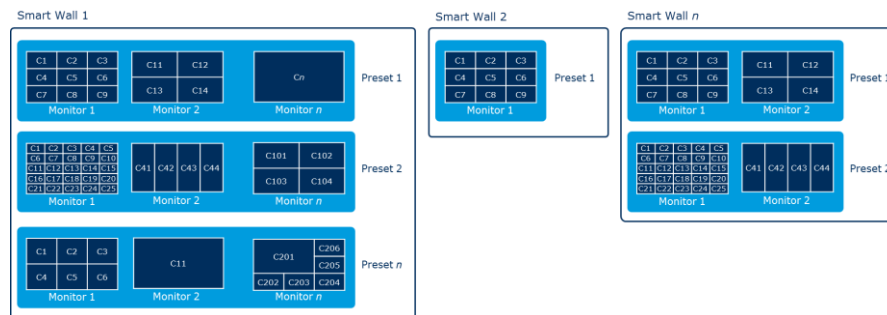
The integrated control optimizes the workflow and helps operators share information quickly, while reducing the risk for human errors. Operators may also share still images of persons of interest, bookmarks of relevant video recordings and a map of where the incident takes place.

Collaborative investigation

Video walls are normally real-time decision support systems. XProtect Smart Wall extends this by also being a tool for collaborative investigations. Any operator can initiate a playback of one, or multiple, cameras on the Smart Wall from his/her Smart Client workstation. This allows the investigation team to jointly review and discuss the incident and the causes of events.

The flexible nature of the Smart Wall

XProtect Smart Wall is not a physical video wall, but rather a logical infrastructure for displaying camera streams and other content on video wall monitors. The logical structure is based on a virtual Smart Wall definition that contains a number of virtual monitors. An XProtect VMS installation may contain any number of virtual Smart Walls, each containing an unlimited number of monitors.



The logical Smart Wall definition provides unlimited flexibility to adapt the structure and behavior of the video wall for a given installation

XProtect Smart Wall is also flexible in the sense that the individual virtual Smart Walls can be pre-configured to present cameras relevant for a specific surveillance situation. This is done via presets that defines the layout and content of each of the virtual monitors in a virtual Smart Walls. This means that it for example is easy to automatically optimize the Smart Wall content for day and night operation, respectively. Presets can also be created to optimize the Smart Wall presentation to cover for typical incidents situations, such as intrusion or fire alarms.

Collaboration with no physical boundaries

The logical Smart Wall infrastructure also enables flexible sharing of content across any XProtect Smart Wall or XProtect Smart Client in a system. This makes it possible to share content across multiple physical video walls (1), across different locations (2), and even with external resources or authorities like police, fire brigade etc. (3). This means that it is easy to duplicate individual monitors or complete video walls across different locations.

Use subject to user rights

The right to operate the Smart Wall function is controlled per user role, and is defined per logical Smart Wall. This makes it easy to control which users are able to send content to a specific Smart Wall.

Controlling Smart Wall via the rule engine

The rule engine offers a powerful way to dynamically optimize the content displayed on the Smart Wall.

The rule engine can be used to:

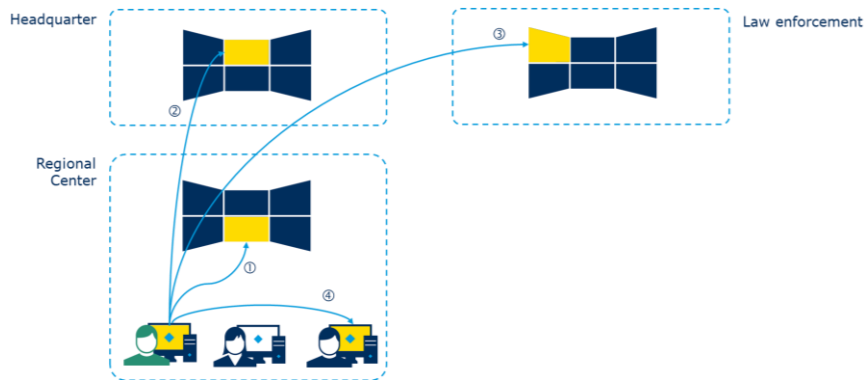
- Send a camera to a Smart Wall
- Remove a camera from a Smart Wall
- Send a text message to a Smart Wall
- Set Smart Wall to a given preset

The rule engine can be triggered by internal and external events and predefined time schedules.

Working with presets

Presets can be activated automatically by the rule engine, or manually by operators.

As operators can at any time change the content of the Smart Wall, by sending other content to it, the presets can be used to revert back to the original default content defined for the given preset.



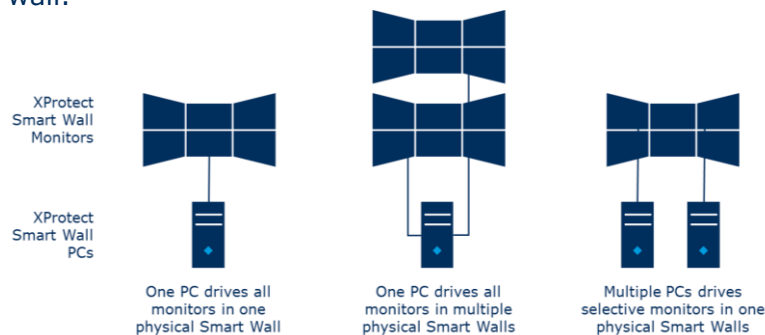
XProtect Smart Wall allows for seamless sharing of content across multiple physical video walls, and with individual operators

The collaborative capabilities of the XProtect Smart Wall also allow operators to share content with individual users via the XProtect Smart Client (4).

Cost efficient - no need for special hardware

Normally video walls demand special and costly hardware that collects and displays video streams on special monitors to create the needed overview. XProtect Smart Wall is hardware independent because it uses standard off-the-shelf displays and PCs driving the displays. This makes the Milestone XProtect Smart Wall solution significantly more cost efficient than traditional video wall solutions.

In addition, XProtect Smart Wall supports hardware accelerated video decoding and rendering. This means that relatively low-cost computers can be used to drive the displays in the physical video wall.



XProtect Smart Wall offers full flexibility in the physical design of video walls, to meet individual needs with respect to number of displays, and number and characteristics of video streams to be displayed

Want to know more

Read more about Milestone XProtect Smart Wall:



Read more about Milestone XProtect VMS solutions:



Want to know more about hardware decoding

Download the Intel Whitepaper on the Milestone – Intel cooperation around the development of Intel® Quick Sync Video for hardware based decoding and rendering:



How to buy

XProtect Smart Wall is an XProtect Add-on product that is included in XProtect Corporate and can be purchased as an option to XProtect Expert.

Milestone Systems is a global industry leader in open platform IP video management software, founded in 1998 and now operating as a standalone company in the Canon Group. Milestone technology is easy to manage, reliable and proven in thousands of customer installations, providing flexible choices in network hardware and integrations with other systems. Sold through partners in more than 100 countries, Milestone solutions help organizations to manage risks, protect people and assets, optimize processes and reduce costs.