

Easily navigate between cameras located on different floors

Supported in XProtect Smart Map

Introducing support for multi-layer buildings in the Smart Map, providing a smooth user experience navigating between cameras on different floors in the same building. Based on supported map formats such as Google and Bing, users can now define building layouts on the map, upload supported floor plans (CAD/JPEG/PNG), populate each floor with cameras according to their exact location and easily navigate between the floors and the cameras for complete situational awareness.

Many large video installations are spread across multi-layer buildings, having cameras and other connected devices located right on top of each other on different floors. Such aggregation of cameras and their position in the Smart Map can appear clustered which could make distinguishing and navigating between cameras cumbersome and slow, not a desired experience especially when following an incident in real-time.

Based on supported online map services such as Google maps, Bing maps and OpenStreetMap, users can now identify building layouts on the map and define the number of floors in each building. They can then upload any supported floor plan (CAD/SHP/Bitmap) and populate each floor with cameras according to their exact location. This allows the user to easily navigate between the different floors and between the cameras on each floor, resulting in increased situational awareness and a smooth user-experience.

Top 3 benefits



Easily navigate between floors and cameras



Respond quicker to incidents



Smooth user experience

Works in 3 simple steps



Define building layout and number of floors



Upload your floorplans

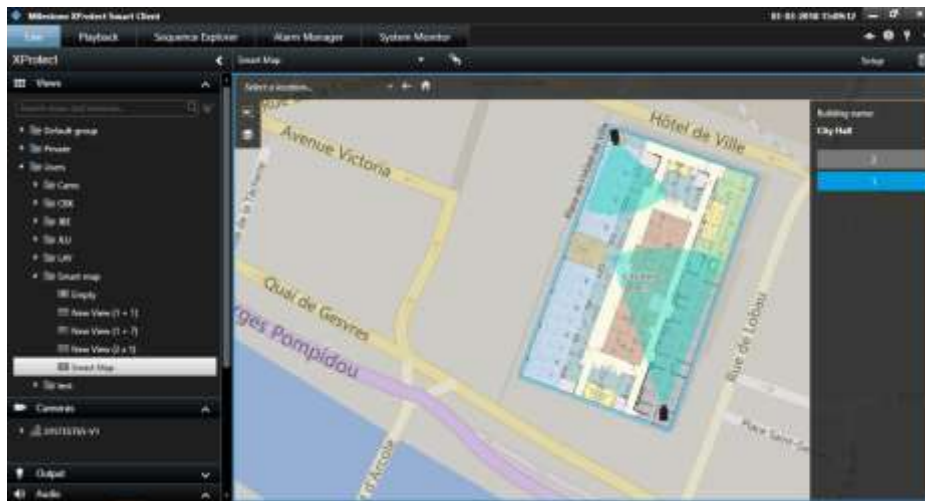


Add cameras and enjoy a smooth and seamless experience

Supported formats

The Building support feature supports online map services such as Google, Bing and OpenStreetMap, and Geo-referenced files such as CAD SHP and Bitmap

Unlike other VMS'es that require the user to switch between different maps when moving from the inside of a building to the outside, XProtect provides a smooth and unified user experience. It does this by using the online map services and the individually uploaded files to create a one-map environment. This allows the user to zoom in and out from public areas to private buildings, and from a building layout to an indoor floor plan using the same map and view in the Smart Client.



A building layout identified, two floors set, and cameras positioned on a combined map environment based on Google maps in XProtect Smart Map.

This feature was designed with the user experience in mind, making it easy for the user to position cameras and navigate between them and as simple as possible to move from open public map areas to private buildings. It is now possible to identify cameras covering multiple floors for example cameras located in elevators, mezzanines or in staircases. The user can define these cameras as 'multi-level' cameras and link them to more than one floor in the building, so that these cameras will appear every time one of the floors they are linked to is selected.

Key features

- Supports multiple floorplans per each floor
- Autofit of the uploaded floorplan to the layout of the building
- Backdrop is dimmed once a building was selected to draw attention to the building
- Allows auto and manual ordering of floors defined
- Automatically goes back to the floor visited last when returning to a specific building

Levels Management



The building levels pane as shown in the Smart Client

Read more about Milestone XProtect VMS solutions:



Milestone Systems is a global industry leader in open platform IP video management software, founded in 1998 and now operating as a standalone company in the Canon Group. Milestone technology is easy to manage, reliable and proven in thousands of customer installations, providing flexible choices in network hardware and integrations with other systems. Sold through partners in more than 100 countries, Milestone solutions help organizations to manage risks, protect people and assets, optimize processes and reduce costs.