

MAKE THE
WORLD SEE

Milestone Systems

XProtect® Input Unit Plug-ins 2022 R1 for Pelco KBD300A
Keyboard

[Getting started guide](#)

[XProtect Smart Client](#)



Contents

Copyright, trademarks, and disclaimer	3
Introduction	4
Pelco KBD300A Keyboard and XProtect Smart Client	5
Install Pelco KBD300A Keyboard	5
Install XProtect Input Unit Plug-in	5
Configure the XProtect Input Unit Plug-in	7
Configurable actions	7
Example – use a shortcut key to view video from a camera	8
Example – Use a shortcut key to start recording	9
Profile settings	10
Device settings	10
Joystick settings	10
Serial port settings	11
Default settings for devices and action mappings	11

Copyright, trademarks, and disclaimer

Copyright © 2022 Milestone Systems A/S

Trademarks

XProtect is a registered trademark of Milestone Systems A/S.

Microsoft and Windows are registered trademarks of Microsoft Corporation. App Store is a service mark of Apple Inc. Android is a trademark of Google Inc.

All other trademarks mentioned in this document are trademarks of their respective owners.

Disclaimer

This text is intended for general information purposes only, and due care has been taken in its preparation.

Any risk arising from the use of this information rests with the recipient, and nothing herein should be construed as constituting any kind of warranty.

Milestone Systems A/S reserves the right to make adjustments without prior notification.

All names of people and organizations used in the examples in this text are fictitious. Any resemblance to any actual organization or person, living or dead, is purely coincidental and unintended.

This product may make use of third-party software for which specific terms and conditions may apply. When that is the case, you can find more information in the file `3rd_party_software_terms_and_conditions.txt` located in your Milestone system installation folder.

Introduction

This document describes how to install and configure the XProtect Input Unit Plug-in for the Pelco KBD300A Keyboard in XProtect Smart Client. This document assumes that you know how to operate Pelco KBD300A Keyboard.

A full description of Pelco KBD300A Keyboard is available in a document titled *Pelco_KBD300A_Universal_Keyboard_manual.pdf*, which installs on your computer when you install the XProtect Input Unit Plug-in.

Pelco KBD300A Keyboard and XProtect Smart Client

The Pelco KBD300A Keyboard lets you view and control cameras and video recorders at local and remote facilities.

The XProtect Input Unit Plug-in for the Pelco KBD300A Keyboard lets you use a Pelco KBD300A Keyboard to perform tasks in XProtect Smart Client.

There is no one-to-one mapping of Pelco KBD300A Keyboard functions to XProtect Smart Client functions and vice versa. Some Pelco KBD300A Keyboard functionality is not applicable for XProtect Smart Client, and XProtect Smart Client contains functionality not implemented in Pelco KBD300A Keyboard.

Install Pelco KBD300A Keyboard

Pelco KBD300A Keyboard has many operational features, and can be used in numerous operational modes. In this document, CM6700 ASCII MODE is used (for cable connections, refer to *Pelco_KBD300A_Universal_Keyboard_manual.pdf*: INSTALLATION – CM6700 ASCII MODE).

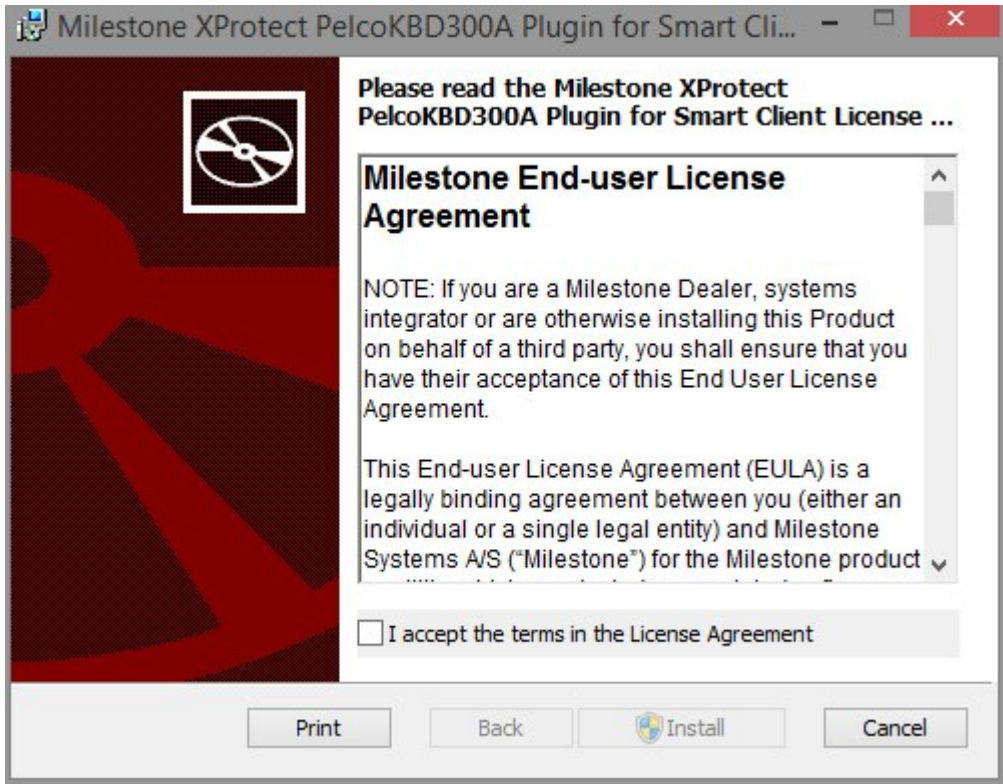
To install on a PC that is served by a COM port or USB communications facility, use an RS-422 connection at the keyboard and an RS-422 Converter to transfer to RS-232, then a Serial to USB Converter to connect to the PC.

Install XProtect Input Unit Plug-in

You must have XProtect Smart Client version 2016 or later installed. XProtect Input Unit Plug-in does not support previous versions.

XProtect Input Unit Plug-in for Pelco KBD300A Keyboard comes with an installer. To install the plugin, do the following:

1. To download the installer for the XProtect Input Unit Plug-in, go to <https://www.milestonesys.com/downloads/> and download the appropriate installer for your computer.
2. Double-click **Milestone_PelcoKBD300A_Plugin_Installer_x64.msi** to start the installation.

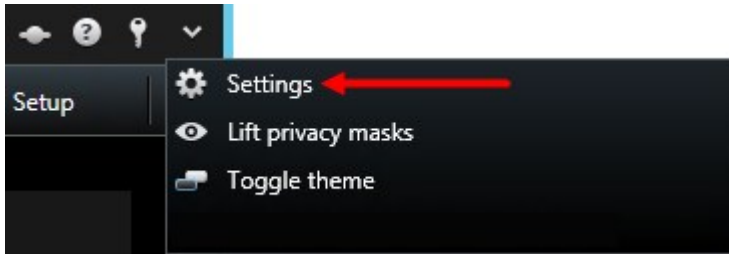


3. To install XProtect Input Unit Plug-in, accept the terms of the license agreement and then click **Install**.
4. When the installation is complete, click **Finish**.

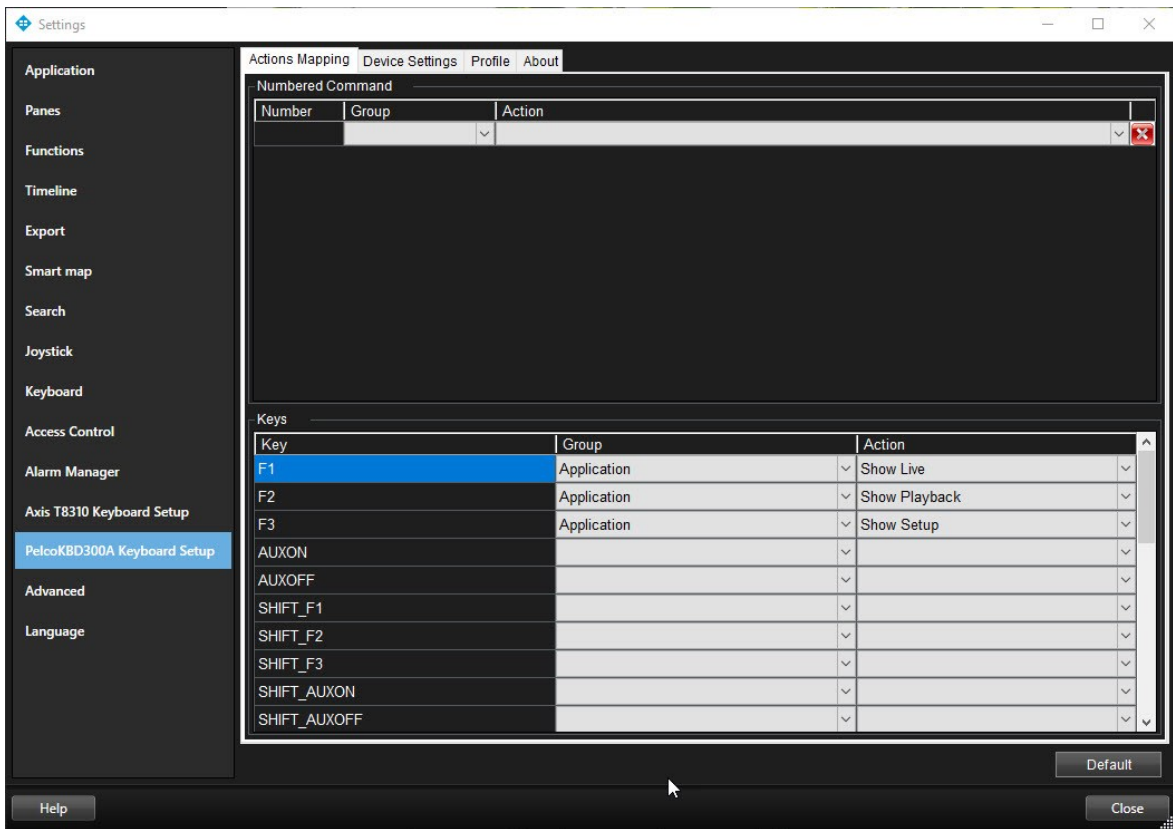
Configure the XProtect Input Unit Plug-in

To configure the XProtect Input Unit Plug-in in XProtect Smart Client, follow these steps:

1. Start XProtect Smart Client, and then click **Settings** in the upper right corner.



2. In the **Settings** window, click **Pelco KBD300A Keyboard Setup**.

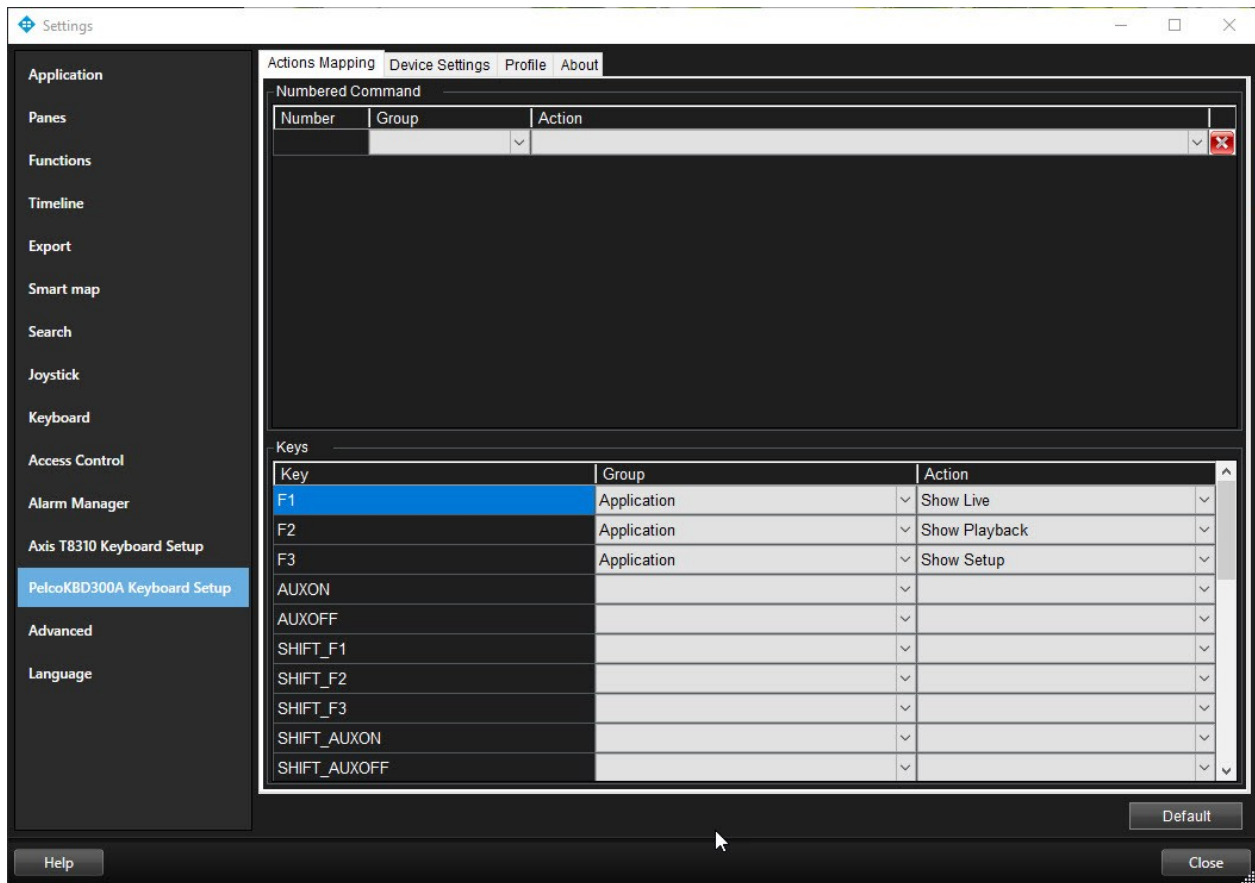


Configurable actions

The XProtect Input Unit Plug-in lets you map keys on the Pelco KBD300A Keyboard to actions, or tasks, in XProtect Smart Client. You can map actions to numbers, or to specific keys such as **MON** or **9**.

For example, you might want to select a specific camera when you press the **ACK** key, or switch to a different view when you press the number **9**.

Configure combinations of numbers or keys and actions on the **Actions Mapping** tab.



The tab contains two groups. Map actions in each group as follows:

- **Numbered Command** - Map actions to numbers
- **Keys** - Map actions to specific keys on the keyboard

For each number or key:

- In the **Group** list, specify where to apply the action. For example, if you select Views you can select an action that is useful when you need to do something in a view. This might be when you want to go to the next view
- In the **Action** list, select the outcome of the action. The actions that are available differ, depending on the Group you selected

You can map both a number and a key to the same action.

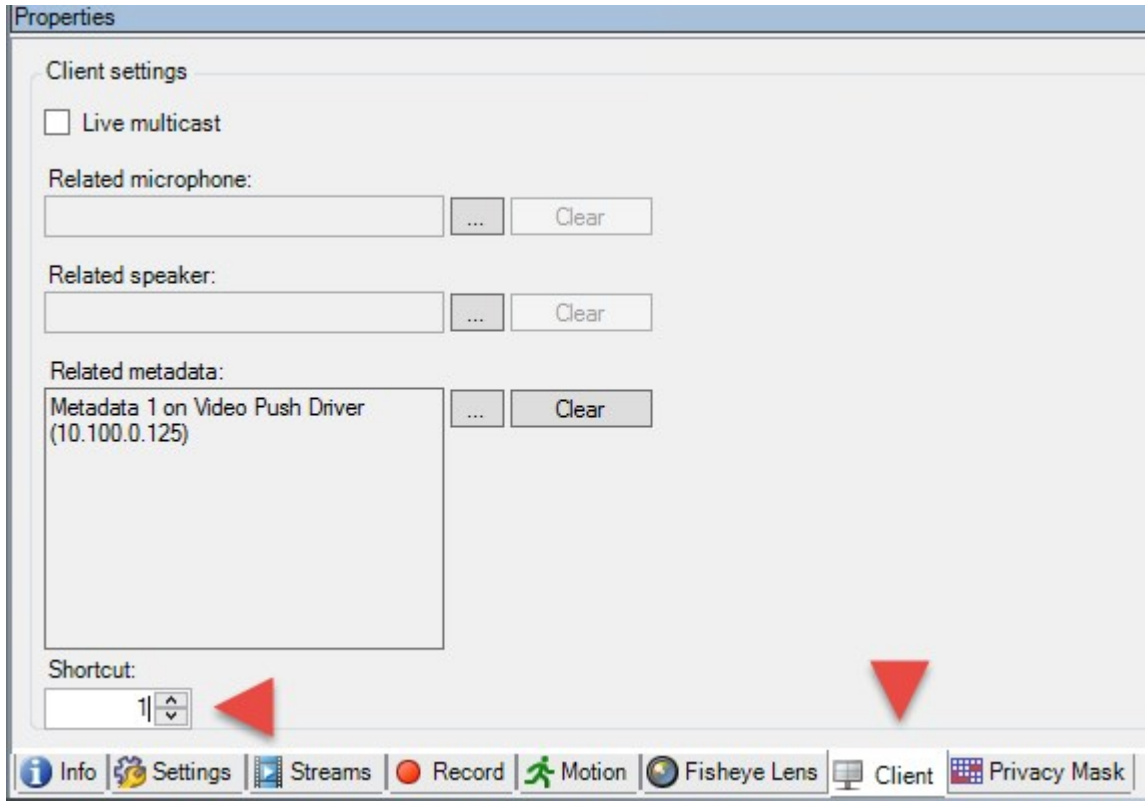
After you map keys or buttons to actions, you can use them in XProtect Smart Client.

- Numbered commands - enter the number and then press **ACK** on the Pelco KBD300A Keyboard
- Keys - press the key on the Pelco KBD300A Keyboard

Example – use a shortcut key to view video from a camera

You can quickly view video from a camera by mapping the camera's shortcut key to the **Select camera** action.

1. In XProtect Management Client or XProtect Management Application, select the camera, click the **Client** tab, and then make sure that a shortcut is defined in the **Shortcut** field.



2. In XProtect Smart Client, in the **Settings** window, select a key. Then, in the **Group** list, select **KeyboardPluginActions**. In the **Action** list, click **Select camera**. By default, this action uses the **CAM** key.
3. To apply the action, enter the camera's shortcut number followed by CAM.

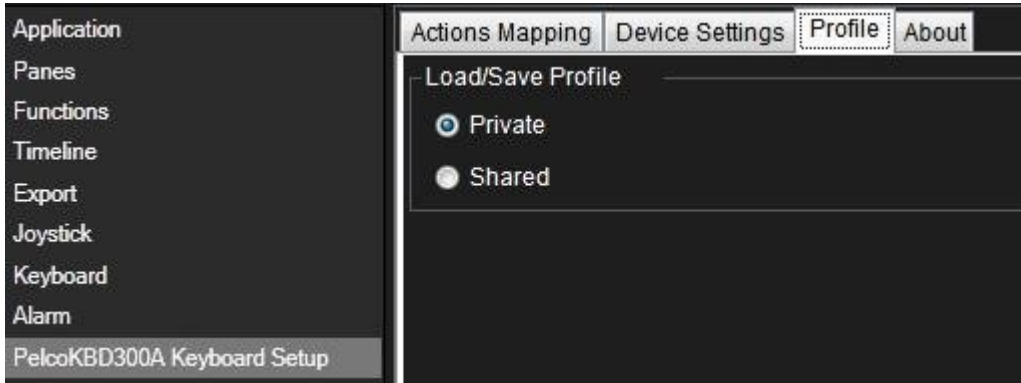
Example – Use a shortcut key to start recording

When you are viewing live footage from a camera, you can use a shortcut number or a specific key to start recording.

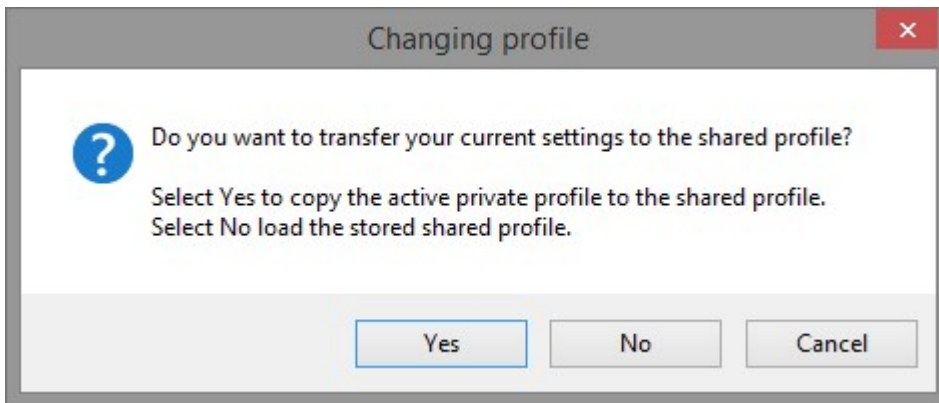
1. To create an action that starts recording, do one of the following:
 - In the **Numbered Command** group, in the **Number** field, enter a number
 - In the **Keys** group, select a key
2. In the **Group** list, select **Camera**.
3. In the **Action** list, select **Start recording on selected camera**.
4. To apply the action, select the view that contains the camera, and then enter the action's number followed by **ACK**.

Profile settings

The current setting is stored privately on the server, but you can transfer it to the shared profile. The settings then apply to everyone who uses the profile.



A message dialog displays if the profile changes. For example, if you change the profile from **Private** to **Shared**.



Device settings

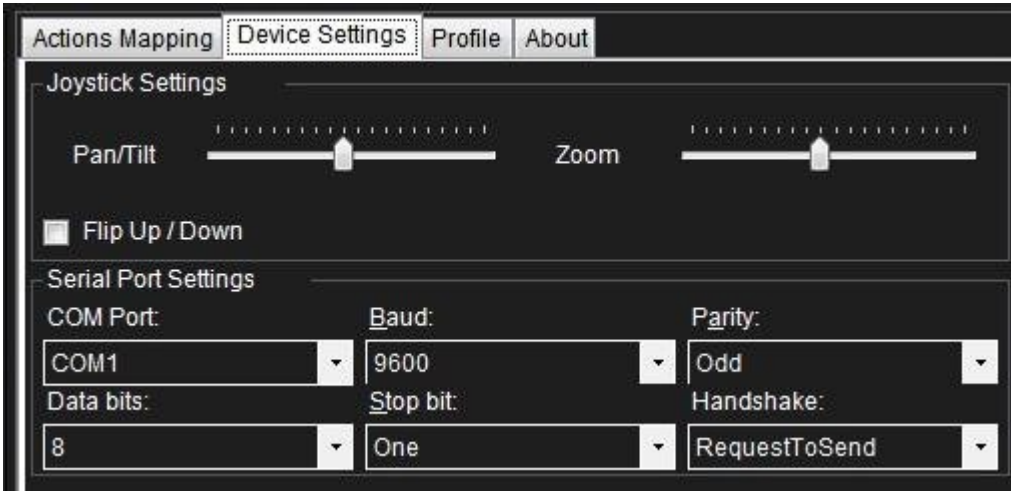
Joystick settings

Settings for joysticks are available on the **Device Settings** tab. The joystick tilt direction on the Pelco KBD300A Keyboard is as follows:

- Forward - Tilt the camera up
- Backward - Tilt the camera down
- Right – Pan the camera to the right
- Left – Pan the camera to the left

The **Flip Up / Down** check box inverts these movements. For example, if you select this check box, moving the joystick forward tilts it down.

Adjusting the **Pan/Tilt** and **Zoom** sliders speeds up or slows down movements and zooming.

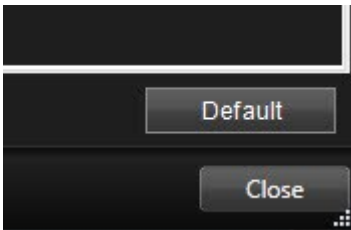


Serial port settings

- **COM Port:** Select the COM (Serial) port that the Pelco KBD300A Keyboard uses. The drop- down list displays all COM port on the computer.
- **Baud, Parity, Data Bits, Stop bit, and Handshake:** These must be the same values that are defined on the Pelco KBD300A Keyboard by the system administrator.

Default settings for devices and action mappings

You can restore the default settings for a profile by clicking the **Default**. This restores default settings for devices and action mappings.



The default settings include:



The following image shows the default mappings.

Key	Group	Action
F1	Application	Show Live
F2	Application	Show Playback
F3	Application	Show Setup
AUXON		
AUXOFF		
SHIFT_F1		
SHIFT_F2		
SHIFT_F3		
SHIFT_AUXON		
SHIFT_AUXOFF		
MON	KeyboardPluginActions	* Select view
CAM	KeyboardPluginActions	* Select camera
ACK	KeyboardPluginActions	* Generic command number
PREV	Time navigation	Previous image
FORWARD	Time navigation	Start forward playback
NEXT	Time navigation	Next image
REVERSE	Time navigation	Start reverse playback
HOLD	Time navigation	Stop playback
PATTERN		
PRESET		
SET_PRESET		
CLEAR_PRESET		
MACRO		
NEAR	PTZ	Focus near while pressing
FAR	PTZ	Focus far while pressing
OPEN	PTZ	Iris up
CLOSE	PTZ	Iris down
PTZ	KeyboardPluginActions	* PTZ



helpfeedback@milestone.dk

About Milestone

Milestone Systems is a leading provider of open platform video management software; technology that helps the world see how to ensure safety, protect assets and increase business efficiency. Milestone Systems enables an open platform community that drives collaboration and innovation in the development and use of network video technology, with reliable and scalable solutions that are proven in more than 150,000 sites worldwide. Founded in 1998, Milestone Systems is a stand-alone company in the Canon Group. For more information, visit <https://www.milestonesys.com/>.

