

MAKE THE  
WORLD SEE

# Milestone Systems

---

XProtect® Input Unit Plug-ins 2021 R2 for Panasonic WV-  
CU950 Controller

[Getting started guide](#)

[XProtect Smart Client](#)



# Contents

|  |          |
|--|----------|
| <b>Copyright, trademarks, and disclaimer</b> .....                   | <b>3</b> |
| <b>Introduction</b> .....  | <b>4</b> |
| <b>Panasonic WV-CU950 Controller and XProtect Smart Client</b> ..... | <b>5</b> |
| Install Panasonic WV-CU950 Controller .....                          | 5        |
| Install XProtect Input Unit Plug-in .....                            | 5        |
| <b>Configure the XProtect Input Unit Plug-in</b> .....               | <b>7</b> |
| Configurable actions .....   | 7        |
| Example – Use a shortcut key to view video from a camera .....       | 9        |
| Example – Use a shortcut key to start recording .....                | 9        |
| Profile settings .....   | 10       |
| Device settings .....  | 10       |
| Joystick settings .....  | 10       |
| TCP port settings .....  | 11       |
| Default settings for devices and action mappings .....               | 11       |

## Copyright, trademarks, and disclaimer

Copyright © 2021 Milestone Systems A/S

### Trademarks

XProtect is a registered trademark of Milestone Systems A/S.

Microsoft and Windows are registered trademarks of Microsoft Corporation. App Store is a service mark of Apple Inc. Android is a trademark of Google Inc.

All other trademarks mentioned in this document are trademarks of their respective owners.

### Disclaimer

This text is intended for general information purposes only, and due care has been taken in its preparation.

Any risk arising from the use of this information rests with the recipient, and nothing herein should be construed as constituting any kind of warranty.

Milestone Systems A/S reserves the right to make adjustments without prior notification.

All names of people and organizations used in the examples in this text are fictitious. Any resemblance to any actual organization or person, living or dead, is purely coincidental and unintended.

This product may make use of third-party software for which specific terms and conditions may apply. When that is the case, you can find more information in the file `3rd_party_software_terms_and_conditions.txt` located in your Milestone system installation folder.

## Introduction

This document describes how to install and maintain the XProtect Input Unit Plug-in for Panasonic WV-CU950 Controller in XProtect Smart Client. This document assumes that you know how to operate the Panasonic WV-CU950 Controller.

A full description of the the Panasonic WV-CU950 Controller is available in a document titled *WVCU950.pdf*, which installs on your computer when you install the XProtect Input Unit Plug-in.

## Panasonic WV-CU950 Controller and XProtect Smart Client

The Panasonic WV-CU950 Controller is a video control station that lets you view and control cameras and video recorders at local and remote facilities.

The XProtect Input Unit Plug-in for Panasonic WV-CU950 Controller lets you use a Panasonic WV-CU950 Controller to perform tasks in XProtect Smart Client.

There is no one-to-one mapping of Panasonic WV-CU950 Controller functions to XProtect Smart Client functions and vice versa. Some Panasonic WV-CU950 Controller functionality is not applicable for XProtect Smart Client, and XProtect Smart Client contains functionality that is not used by Panasonic WV-CU950 Controller.

### Install Panasonic WV-CU950 Controller

Panasonic WV-CU950 Controller has many operational features and can be used in numerous operational modes. In this document, Ethernet mode is used. (Refer to *WV- CU950 System Controller Interface Ver.1.10.pdf* chapter 1.2 Controller Setup)

To apply this mode:

1. Set the MODE Switch 1, 4 and 5 to ON.



2. For cable connections, refer to the operating instructions of connected devices for details on connections and operations.
3. **CONTROLLER NO.** switch setting



Setting for Ethernet Communication Protocol

Maintain the switch setting as 1 (factory default position).

### Install XProtect Input Unit Plug-in

You must have XProtect Smart Client version 2016 or later installed. The XProtect Input Unit Plug-in does not support previous versions.

XProtect Input Unit Plug-in for Panasonic WV-CU950 Controller comes with an installer. To install the plugin, do the following:

1. To download the installer for the XProtect Input Unit Plug-in, go to <https://www.milestonesys.com/downloads/> and download the appropriate installer for your computer.
2. Double-click **Milestone\_PanasonicWVCU950\_Plugin\_Installer\_x86/x64.msi** to start the installation.

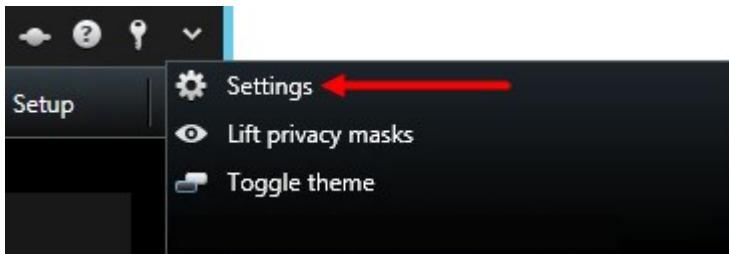


3. To install the XProtect Input Unit Plug-in, accept the terms of the license agreement and then click **Install**.
4. When the installation is complete, click **Finish**.

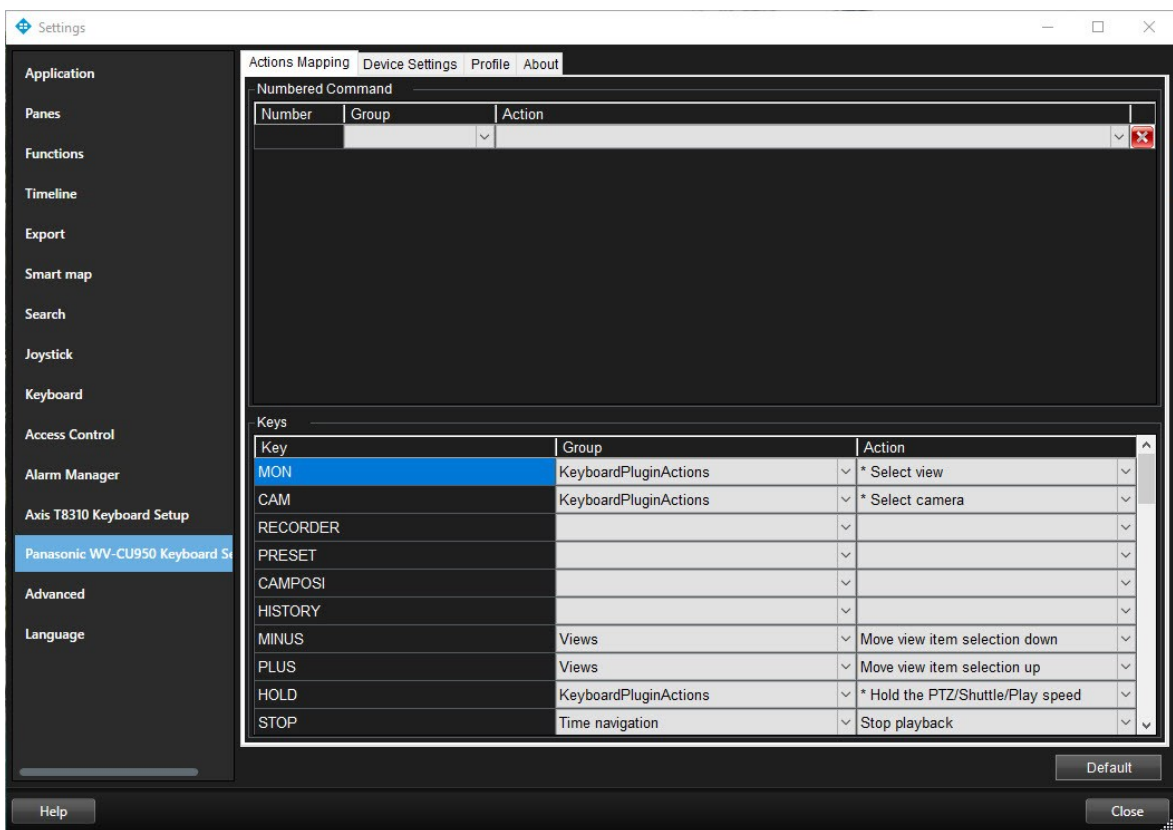
## Configure the XProtect Input Unit Plug-in

To configure the XProtect Input Unit Plug-in in XProtect Smart Client, follow these steps:

1. Start XProtect Smart Client, and then click **Settings** in the upper right corner.



2. In the **Settings** window, click **Panasonic WV-CU950 Keyboard Setup**.

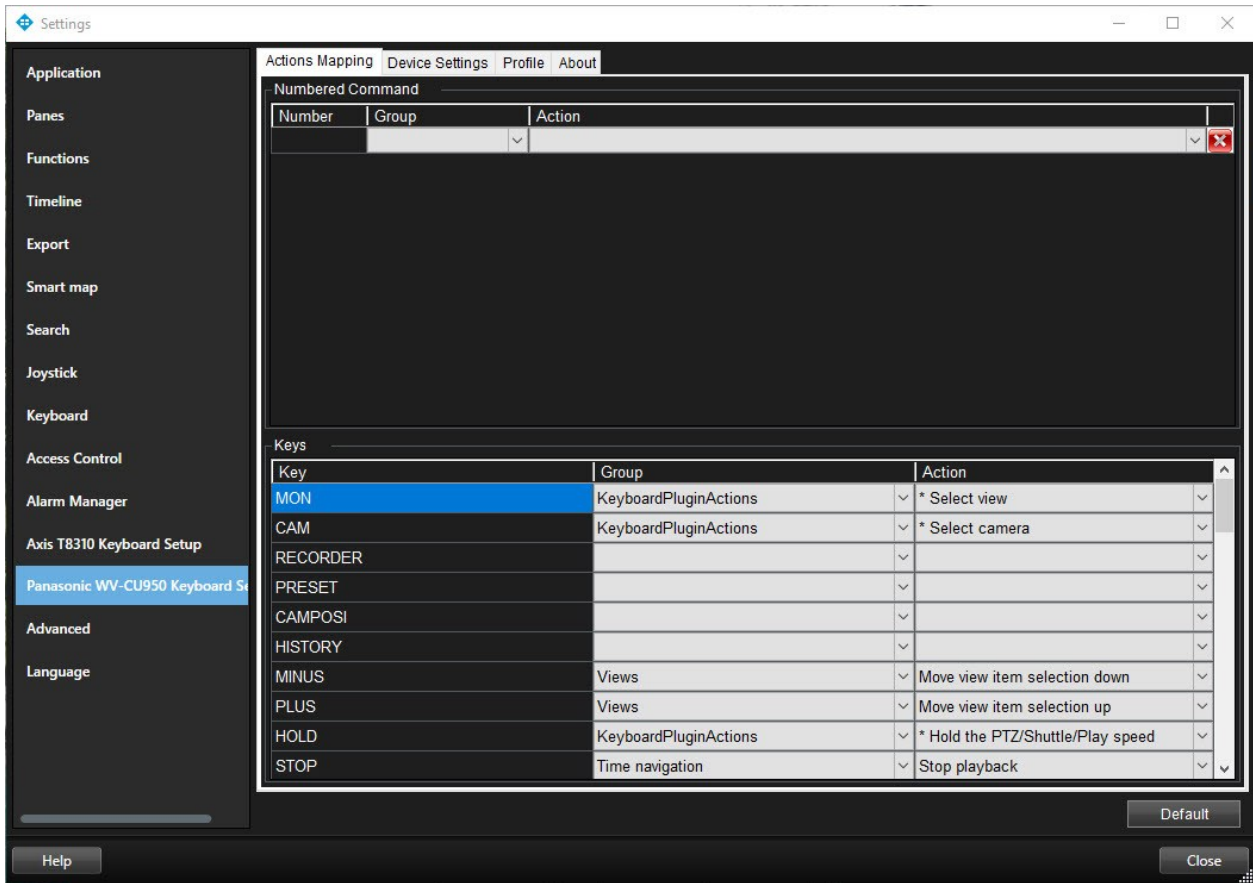


## Configurable actions

The XProtect Input Unit Plug-in lets you map keys on the Panasonic WV-CU950 Controller to actions, or tasks, in XProtect Smart Client. You can map actions to numbers, or to specific keys such as **MON** or **9**.

For example, you might want to select a specific camera when you press the **CAM** key, or switch to a different view when you press the number **9**.

Configure combinations of numbers or keys and actions on the **Actions Mapping** tab.



The tab contains two groups. Map actions in each group as follows:

- **Numbered Command** - map actions to numbers
- **Keys** - map actions to specific keys on the keyboard

For each number or key:

- In the **Group** list, specify where to apply the action. For example, if you select Views you can select an action that is useful when you need to do something in a view. This might be when you want to go to the next view
- In the **Action** list, select the outcome of the action. The actions that are available differ, depending on the group you selected

You can map both a number and a key to the same action.

After you map keys or buttons to actions, you can use them in XProtect Smart Client.

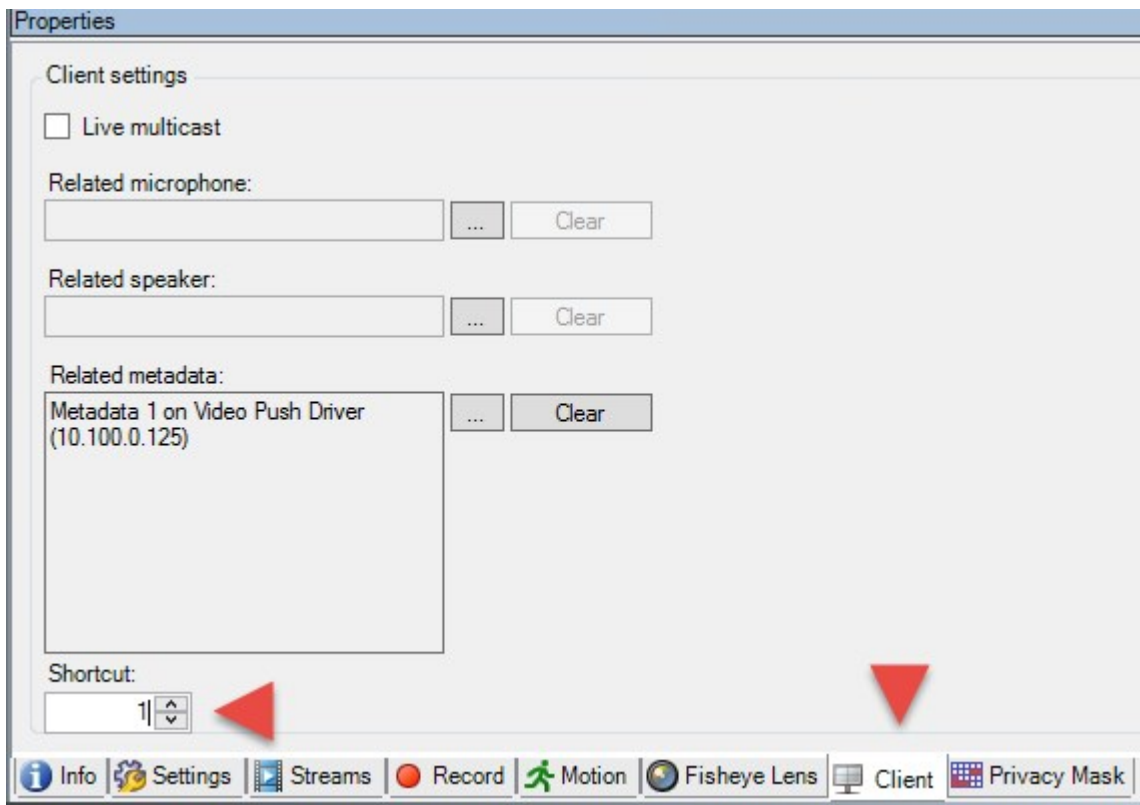
- Numbered commands - enter the number and then press **ENTER** on the Panasonic WV-CU950 Controller
- Keys - press the key on the Panasonic WV-CU950 Controller



## Example – Use a shortcut key to view video from a camera

You can quickly view video from a camera by mapping the camera’s shortcut key to the **Select camera** action.

1. In XProtect Management Client or XProtect Management Application, select the camera, click the **Client** tab, and then make sure that a shortcut is defined in the **Shortcut** field.



2. In XProtect Smart Client, in the **Settings** window, select a key. Then, in the **Group** list, select **KeyboardPluginActions**. In the **Action** list, click **Select camera**. By default, this action uses the **CAM** key.
3. To apply the action, enter the camera’s shortcut number followed by **CAM**.

## Example – Use a shortcut key to start recording

When you are viewing live footage from a camera, you can use a shortcut number or a specific key to start recording.

1. To create an action that starts recording, do one of the following:
  - In the **Numbered Command** group, in the **Number** field, enter a number
  - In the **Keys** group, select a key
2. In the **Group** list, select **Camera**.

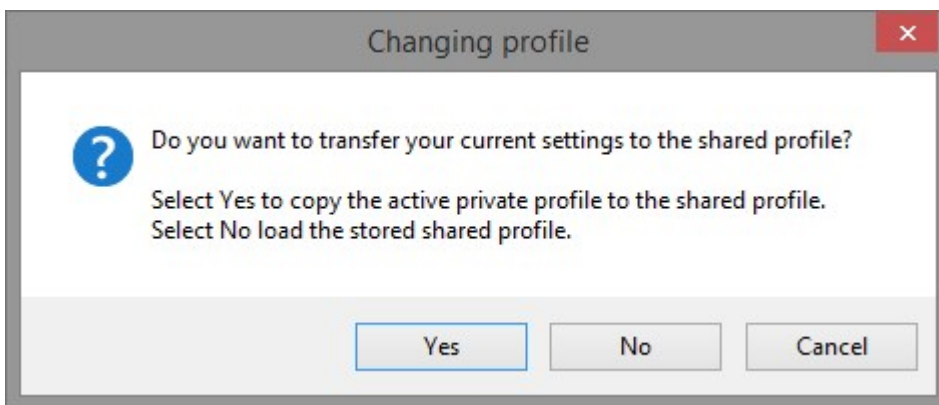
3. In the **Action** list, select **Start recording on selected camera**.
4. To apply the action, select the view that contains the camera, and then enter the action's number followed by **ENTER**.

## Profile settings

The current setting is stored privately on the server, but you can transfer it to the shared profile. The settings then apply to everyone who uses this profile.



A message dialog displays if the profile changes. For example, if you change the profile from **Private** to **Shared**.



## Device settings

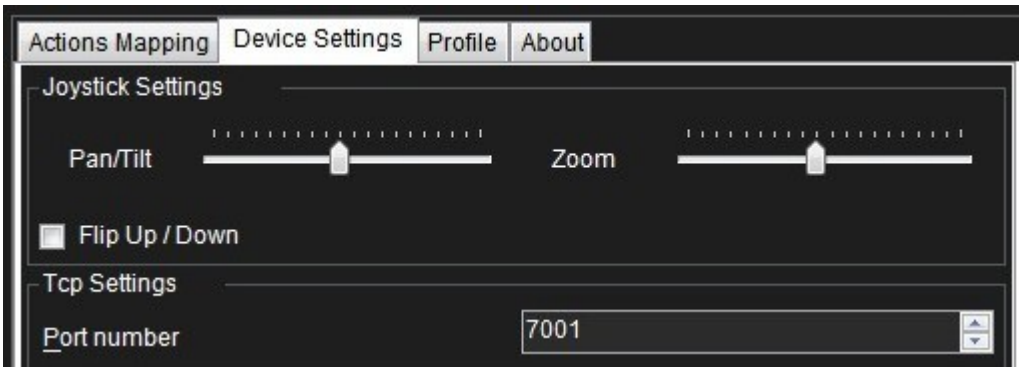
### Joystick settings

Settings for joysticks are available on the **Device Settings** tab. The joystick tilt direction on the Panasonic WV-CU950 Controller is as follows:

- Forward - tilt the camera up
- Backward - tilt the camera down
- Right - pan the camera to the right
- Left - pan the camera to the left

The **Flip Up / Down** check box inverts these movements. For example, if you select this check box, moving the joystick forward tilts it down.

Adjusting the **Pan/Tilt** and **Zoom** sliders speeds up or slows down movements and zooming.

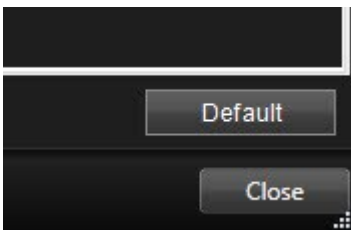


### TCP port settings

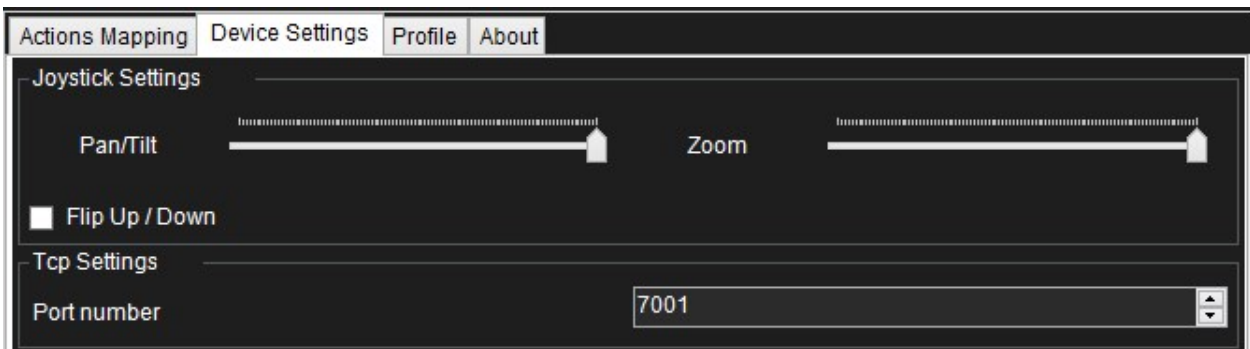
- **Port:** The Panasonic WV-CU950 Controller uses TCP/IP to communicate with PC. You can specify the port number on the **Device Settings** tab. The default value is 7001.

### Default settings for devices and action mappings

You can restore the default settings for a profile by clicking **Default**. This restores default settings for devices and action mappings.



The default device settings include:



The following image shows the default action mappings.

| Key      | Group                 | Action                             |
|----------|-----------------------|------------------------------------|
| MON      | KeyboardPluginActions | * Select view                      |
| CAM      | KeyboardPluginActions | * Select camera                    |
| RECORDER |                       |                                    |
| PRESET   |                       |                                    |
| CAMPOSI  |                       |                                    |
| HISTORY  |                       |                                    |
| MINUS    | Views                 | Move view item selection down      |
| PLUS     | Views                 | Move view item selection up        |
| HOLD     | KeyboardPluginActions | * Hold the PTZ/Shuttle/Play speed  |
| STOP     | Time navigation       | Stop playback                      |
| PLAY     | KeyboardPluginActions | * Play/Pause                       |
| REC      | Camera                | Start recording on selected camera |
| CLEAR    |                       |                                    |
| WIPER    | PTZ                   | Aux 3 on while pressing            |
| DEFON    | PTZ                   | Aux 4 on while pressing            |
| MONLOCK  |                       |                                    |
| AUX1ON   | PTZ                   | Aux 1 on while pressing            |
| AUX2ON   | PTZ                   | Aux 2 on while pressing            |

|                 |                       |   |                           |   |
|-----------------|-----------------------|---|---------------------------|---|
| SEARCH          |                       | ▼ |                           | ▼ |
| MULTISCREEN     |                       | ▼ |                           | ▼ |
| ELZOOM          |                       | ▼ |                           | ▼ |
| GOTOLAST        |                       | ▼ |                           | ▼ |
| MARK            |                       | ▼ |                           | ▼ |
| SEQPAUSE        |                       | ▼ |                           | ▼ |
| TOURSEQ         |                       | ▼ |                           | ▼ |
| OSD             |                       | ▼ |                           | ▼ |
| ALMRECALL       |                       | ▼ |                           | ▼ |
| CAMFUNC         |                       | ▼ |                           | ▼ |
| ALARM           |                       | ▼ |                           | ▼ |
| ACK             |                       | ▼ |                           | ▼ |
| ALMRESET        |                       | ▼ |                           | ▼ |
| LCDAdjust       |                       | ▼ |                           | ▼ |
| MENU            |                       | ▼ |                           | ▼ |
| F1              | Application           | ▼ | Show Live                 | ▼ |
| F2              | Application           | ▼ | Show Playback             | ▼ |
| F3              | Application           | ▼ | Show Setup                | ▼ |
| F4              |                       | ▼ |                           | ▼ |
| EXIT            |                       | ▼ |                           | ▼ |
| ENTER           | KeyboardPluginActions | ▼ | * Generic command number  | ▼ |
| AUTOFOCUS       | PTZ                   | ▼ | Activate focus auto       | ▼ |
| CLOSE           | PTZ                   | ▼ | Iris down                 | ▼ |
| OPEN            | PTZ                   | ▼ | Iris up                   | ▼ |
| NEAR            | PTZ                   | ▼ | Focus near while pressing | ▼ |
| FAR             | PTZ                   | ▼ | Focus far while pressing  | ▼ |
| A               |                       | ▼ |                           | ▼ |
| B               |                       | ▼ |                           | ▼ |
| SHUTTLE_FORWARD | KeyboardPluginActions | ▼ | * Playback forward        | ▼ |
| SHUTTLE_REVERSE | KeyboardPluginActions | ▼ | * Playback reverse        | ▼ |
| SHUTTLE_PLUS    | Time navigation       | ▼ | Next image                | ▼ |
| SHUTTLE_MINUS   | Time navigation       | ▼ | Previous image            | ▼ |
| SHUTTLE_STOP    | KeyboardPluginActions | ▼ | * Play/Pause              | ▼ |
| PTZ             | KeyboardPluginActions | ▼ | * PTZ                     | ▼ |



[helpfeedback@milestone.dk](mailto:helpfeedback@milestone.dk)

#### About Milestone

Milestone Systems is a leading provider of open platform video management software; technology that helps the world see how to ensure safety, protect assets and increase business efficiency. Milestone Systems enables an open platform community that drives collaboration and innovation in the development and use of network video technology, with reliable and scalable solutions that are proven in more than 150,000 sites worldwide. Founded in 1998, Milestone Systems is a stand-alone company in the Canon Group. For more information, visit <https://www.milestonesys.com/>.

