

MAKE THE  
WORLD SEE

# Milestone Systems

---

XProtect® Input Unit Plug-ins 2021 R2 for Bosch IntuiKey  
Keyboard

[Getting started guide](#)

[XProtect Smart Client](#)



## Contents

<b>Copyright, trademarks, and disclaimer</b> .....	<b>3</b>
<b>Introduction</b> .....	<b>4</b>
<b>Bosch IntuiKey Keyboard and XProtect Smart Client</b> .....	<b>5</b>
Install Bosch IntuiKey Keyboard .....	5
Install XProtect Input Unit Plug-in .....	6
<b>Configure XProtect Input Unit Plug-in</b> .....	<b>8</b>
Configurable actions .....	8
Device settings .....	10
Joystick settings .....	10
Serial port settings .....	10
Default settings for devices and action mappings .....	11

## Copyright, trademarks, and disclaimer

Copyright © 2021 Milestone Systems A/S

### Trademarks

XProtect is a registered trademark of Milestone Systems A/S.

Microsoft and Windows are registered trademarks of Microsoft Corporation. App Store is a service mark of Apple Inc. Android is a trademark of Google Inc.

All other trademarks mentioned in this document are trademarks of their respective owners.

### Disclaimer

This text is intended for general information purposes only, and due care has been taken in its preparation.

Any risk arising from the use of this information rests with the recipient, and nothing herein should be construed as constituting any kind of warranty.

Milestone Systems A/S reserves the right to make adjustments without prior notification.

All names of people and organizations used in the examples in this text are fictitious. Any resemblance to any actual organization or person, living or dead, is purely coincidental and unintended.

This product may make use of third-party software for which specific terms and conditions may apply. When that is the case, you can find more information in the file `3rd_party_software_terms_and_conditions.txt` located in your Milestone system installation folder.

## Introduction

This document describes how to install the XProtect Input Unit Plug-in for the Bosch IntuiKey Keyboard in XProtect Smart Client. This document assumes that you know how to operate the Bosch IntuiKey Keyboard.

A full description of the the Bosch IntuiKey Keyboard is available in a document titled *Bosch Controller KBD Universal User Guide.pdf*, which installs on your computer when you install the XProtect Input Unit Plug-in.

## Bosch IntuiKey Keyboard and XProtect Smart Client

Bosch IntuiKey Keyboard is a video control station that enables the user to view and control cameras and video recorders at local and remote facilities.

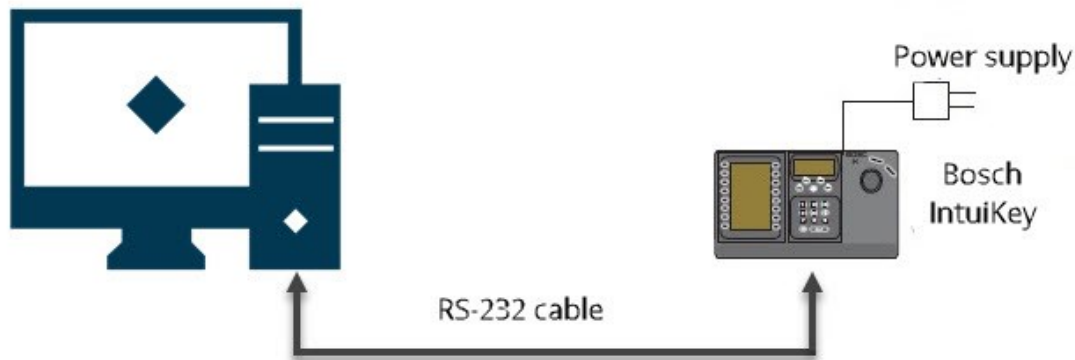
The XProtect Input Unit Plug-in for the Bosch IntuiKey Keyboard lets you use a Bosch IntuiKey Keyboard to perform tasks in XProtect Smart Client.

Please note that the plug-in is compatible only with 32-bit versions of the XProtect Smart Client, not with 64-bit versions.

There is no one-to-one mapping of Bosch IntuiKey Keyboard functions to XProtect Smart Client functions and vice versa. Some Bosch IntuiKey Keyboard functionality is not applicable for XProtect Smart Client, and XProtect Smart Client contains functionality not implemented in the Bosch IntuiKey Keyboard.

### Install Bosch IntuiKey Keyboard

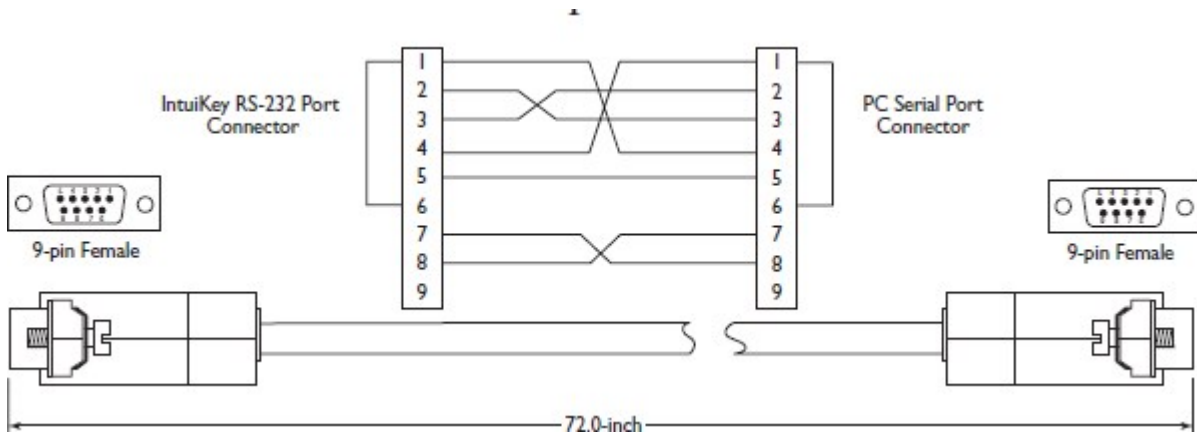
All communication between the Bosch IntuiKey Keyboard and the third-party PC is performed through an RS-232 interface. The following diagram illustrates this configuration:



This connection requires a standard Null modem RS-232 cable. Connect one end of the RS-232 interface cable to the 9-pin RS-232 Serial Port located on the far right side of the rear of the Bosch IntuiKey Keyboard. Connect the other end of the RS-232 interface cable to a COM port on the PC.

If the computer does not have an RS-232 interface, do one of the following:

- If your computer has a USB port, connect the Null modem RS-232 cable to a USB-to-RS232 converter
- To add a COM port, install a PC card



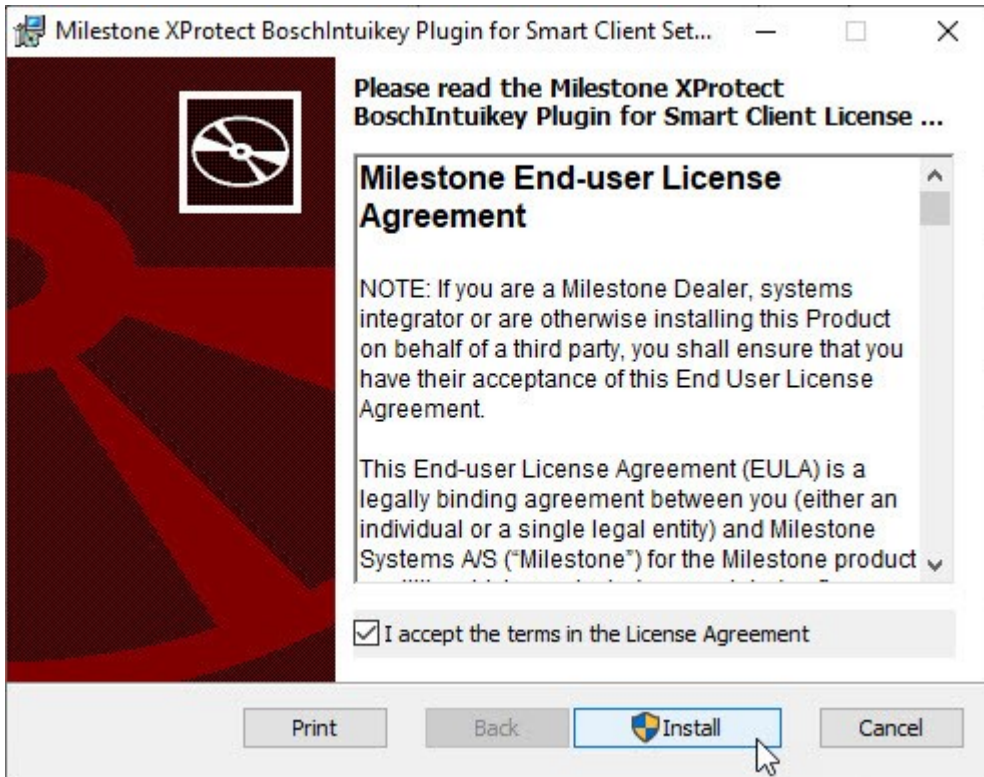
To use Terminal mode, the firmware version on the Bosch IntuiKey Keyboard must be 1.92 or later.

## Install XProtect Input Unit Plug-in

You must have XProtect Smart Client 2016 installed. The XProtect Input Unit Plug-in does not support previous versions.

The XProtect Input Unit Plug-in for the Bosch IntuiKey Keyboard comes with an installer. To install the plugin, do the following:

1. To download the installer for the XProtect Input Unit Plug-in, go to <https://www.milestonesys.com/downloads/> and download the appropriate installer for your computer.
2. Double-click **Milestone\_BoschIntuikey\_Plugin\_Installer.msi** to start the installation.

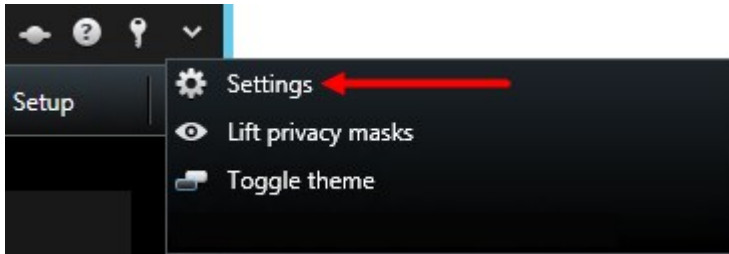


3. To install the XProtect Input Unit Plug-in, accept the terms of the license agreement and then click **Install**.
4. When the installation is complete, click **Finish**.

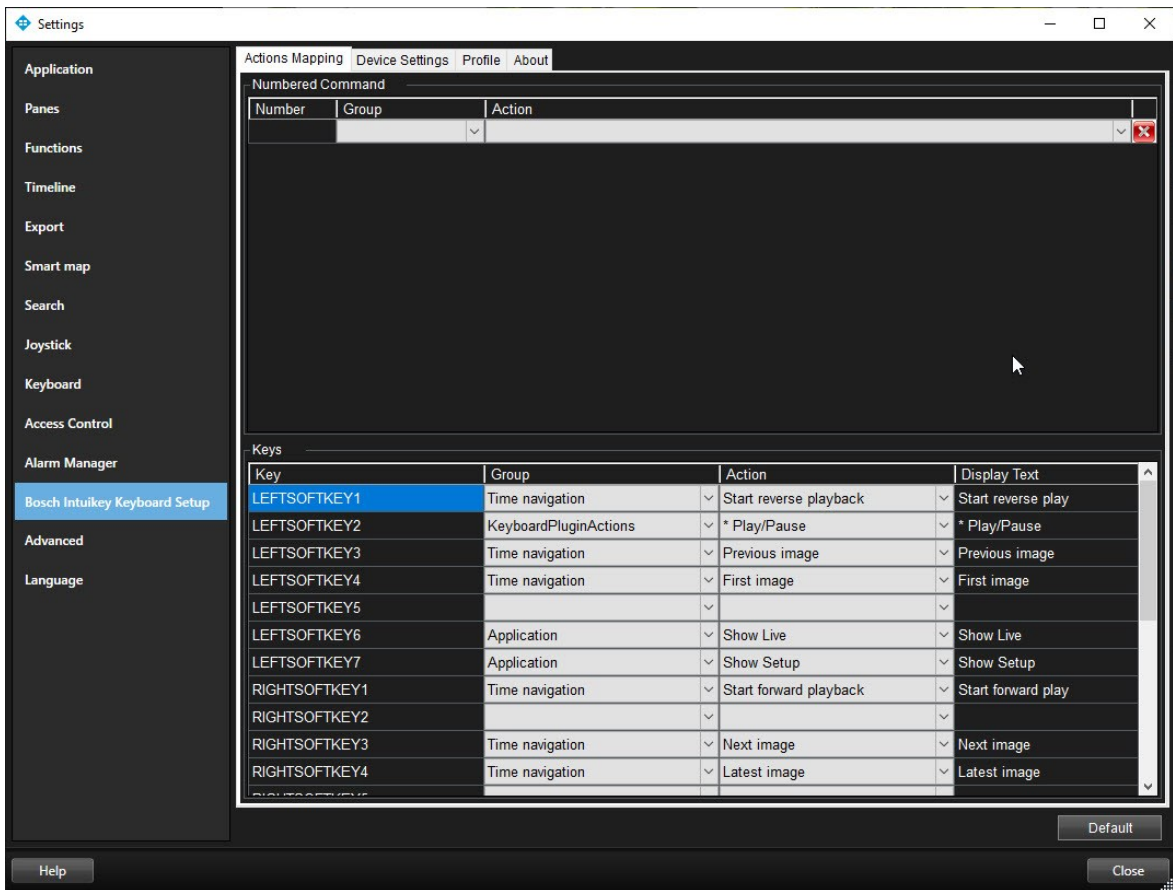
## Configure XProtect Input Unit Plug-in

To configure the XProtect Input Unit Plug-in in XProtect Smart Client, follow these steps:

1. Start XProtect Smart Client, and then click **Settings** in the upper right corner.



2. In the **Settings** window, click **Bosch IntuiKey Keyboard Setup**.



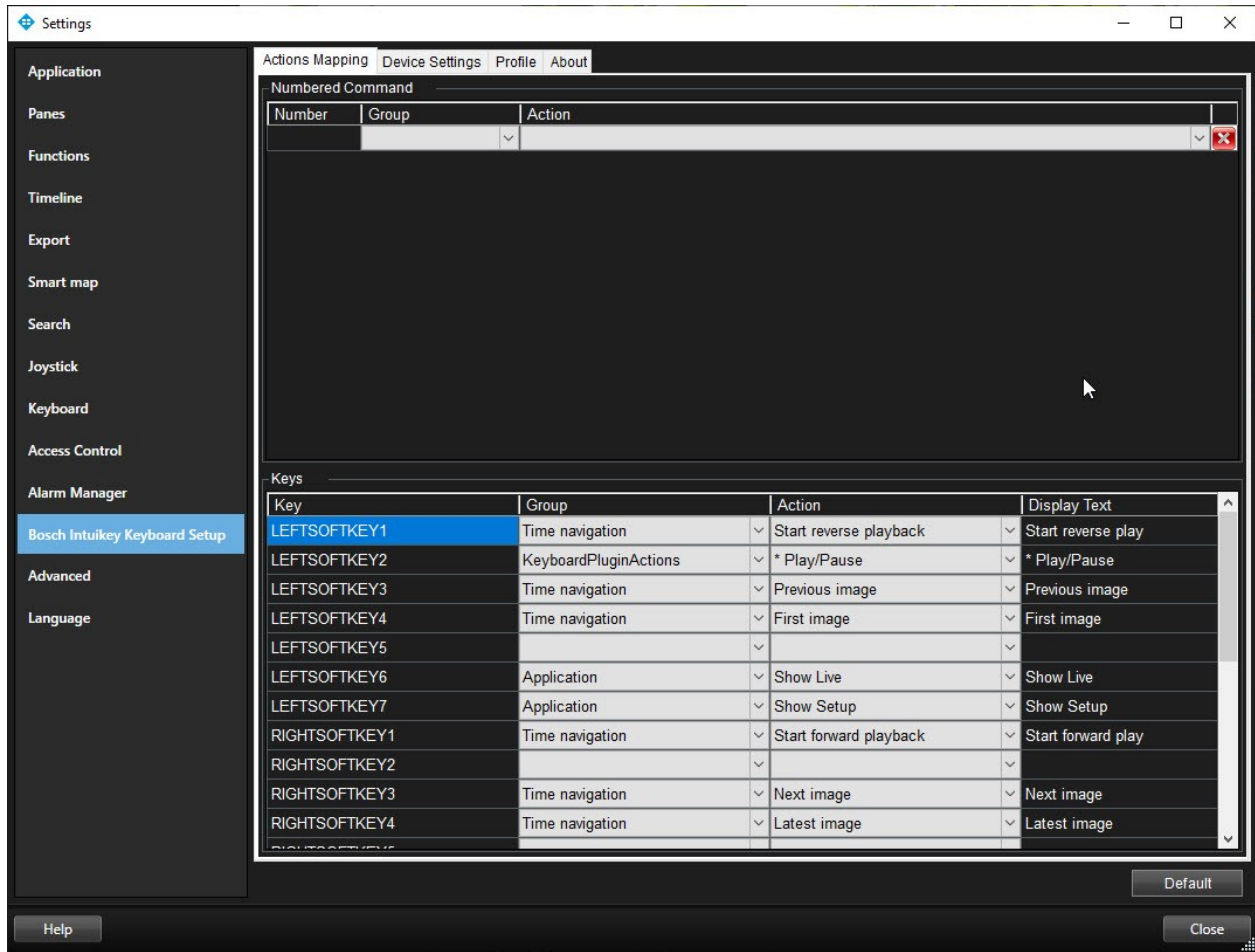
## Configurable actions

The XProtect Input Unit Plug-in lets you map keys on the Bosch IntuiKey Keyboard to actions, or tasks, in XProtect Smart Client. You can map actions to numbers, or to specific keys.



For example, you might want to select a specific camera when you press the **CAM** key, or switch to a different view when you press the number **9**.

Configure combinations of numbers or keys and actions on the **Actions Mapping** tab.



The tab contains two groups. Map actions in each group as follows:

- **Numbered Command** - map actions to numbers
- **Keys** - map actions to specific keys on the keyboard

For each number or key:

- In the **Group** list, specify where to apply the action. For example, if you select **Views** you can select an action that is useful when you need to do something in a view. This might be when you want to go to the next view
- In the **Action** list, select the outcome of the action. The actions that are available differ, depending on the group you selected

You can map both a number and a key to the same action.

After you map keys or buttons to actions, you can use them in **XProtect Smart Client**.

- Numbered commands - enter the number and then press **ENTER** on Bosch IntuiKey Keyboard
- Keys – press the key on the Bosch IntuiKey Keyboard

## Device settings

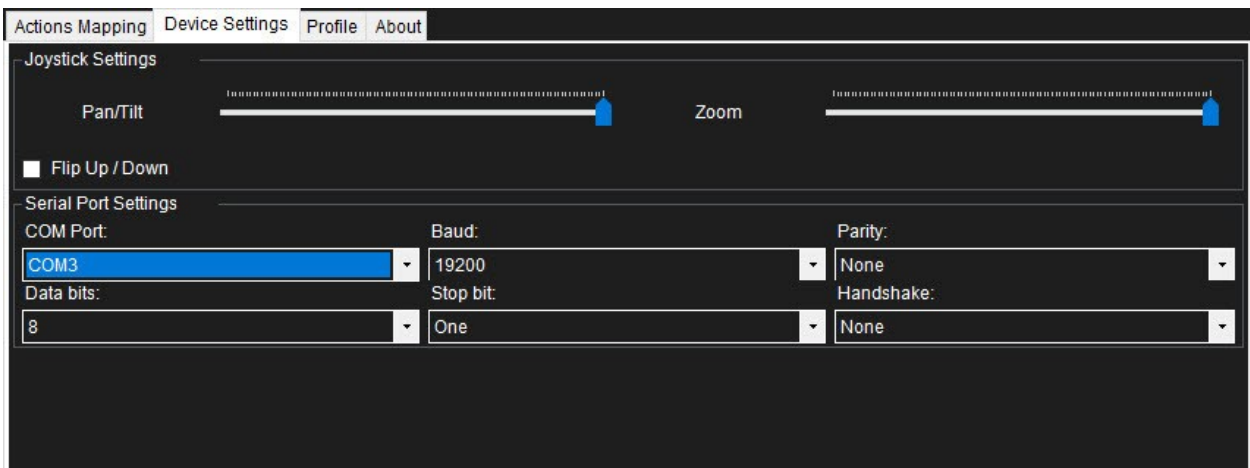
### Joystick settings

Settings for joysticks are available on the **Device Settings** tab. The joystick tilt direction on the Bosch IntuiKey Keyboard is as follows:

- Forward - Tilt the camera up
- Backward - Tilt the camera down
- Right – Pan the camera to the right
- Left – Pan the camera to the left

The **Flip Up / Down** check box inverts these movements. For example, if you select this check box, moving the joystick forward tilts it down.

Adjusting the **Pan/Tilt** and **Zoom** sliders speeds up or slows down movements and zooming.

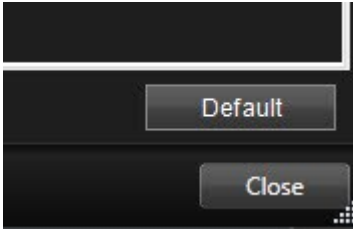


### Serial port settings

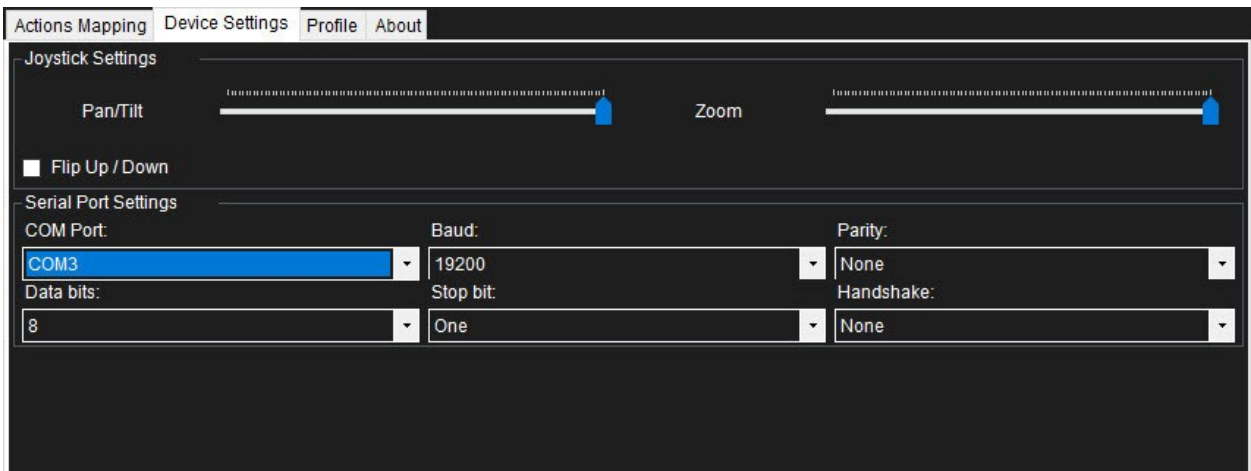
- **COM Port:** Select the COM (Serial) port the Bosch IntuiKey Keyboard uses. The list displays all COM ports on the computer
- **Baud, Parity, Data Bits, Stop Bits, and Handshake:** These must be the same values that are defined on the Bosch IntuiKey Keyboard by the system administrator

## Default settings for devices and action mappings

You can restore the default settings for a profile by clicking **Default**. This restores default settings for devices and action mappings.



The default device settings include:



The following image shows the default action mappings.



[helpfeedback@milestone.dk](mailto:helpfeedback@milestone.dk)

#### About Milestone

Milestone Systems is a leading provider of open platform video management software; technology that helps the world see how to ensure safety, protect assets and increase business efficiency. Milestone Systems enables an open platform community that drives collaboration and innovation in the development and use of network video technology, with reliable and scalable solutions that are proven in more than 150,000 sites worldwide. Founded in 1998, Milestone Systems is a stand-alone company in the Canon Group. For more information, visit <https://www.milestonesys.com/>.

