

# Milestone Systems

XProtect® Access AXIS A1001 Network Door Controller

Quick guide



## Copyright, trademarks, and disclaimer

Copyright © 2024 Milestone Systems A/S

### Trademarks

XProtect is a registered trademark of Milestone Systems A/S.

Microsoft and Windows are registered trademarks of Microsoft Corporation. App Store is a service mark of Apple Inc. Android is a trademark of Google Inc.

All other trademarks mentioned in this document are trademarks of their respective owners.

### Disclaimer

This text is intended for general information purposes only, and due care has been taken in its preparation.

Any risk arising from the use of this information rests with the recipient, and nothing herein should be construed as constituting any kind of warranty.

Milestone Systems A/S reserves the right to make adjustments without prior notification.

All names of people and organizations used in the examples in this text are fictitious. Any resemblance to any actual organization or person, living or dead, is purely coincidental and unintended.

This product may make use of third-party software for which specific terms and conditions may apply. When that is the case, you can find more information in the file `3rd_party_software_terms_and_conditions.txt` located in your Milestone system installation folder.

## Overview

### Introduction, compatibility, and system overview

The XProtect Access AXIS A1001 Network Door Controller Plug-in lets you integrate the AXIS Entry Manager with XProtect Smart Client and XProtect Mobile client. After integration, you can use XProtect Smart Client and XProtect Mobile client to:


- View events
- View status and cardholder information
- Lock and unlock doors

After integration, you can use:

- Live monitoring of access control events
- Operator-aided passage for access requests
- Map integration (only in XProtect Smart Client)
- Alarm definitions for access control events (only in XProtect Smart Client)
- Investigation of access control events
- Centralized door state overview and control
- Cardholder information

Read more about XProtect Access in the Milestone manuals for XProtect VMS, XProtect Smart Client, and XProtect Mobile client (<https://doc.milestonesys.com/>).

### Compatibility

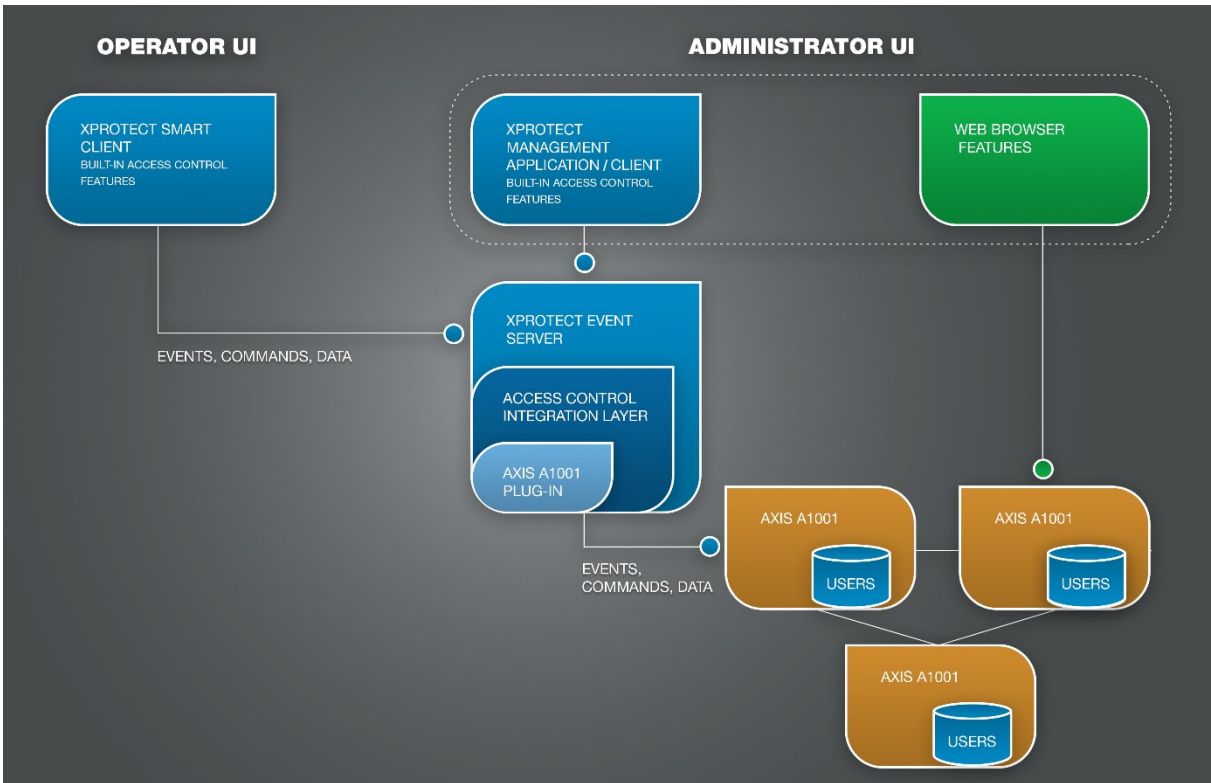
	<i>"Which version of the AXIS A1001 plug-in should I use with my AXIS A1001 firmware?"</i>
---	--

AXIS A1001 firmware version	Compatible AXIS A1001 plug-in
1.55 or newer	2016 R3 (10.2b) or newer
1.46 to 1.50	2016 (10.0a), 2016 R3 (10.2b), or newer
1.45 or older	2016 (10.0a)

## System overview

The AXIS A1001 plug-in is an XProtect Event Server plug-in for the XProtect VMS, and it handles communication with an AXIS A1001 access control system based on the AXIS Entry Manager.

Configuration of the access control system is done via the web-based software on the AXIS A1001, while the Management Client or Management Application handles configuration of the integration with the XProtect VMS.



# Licensing

## Licensing information for XProtect Access

### Finding license information (explained)

For XProtect Access, find license information in the:

- MIP Plug-ins section of Management Application
- License overview page of Management Client

For individual doors, find license information on the **Door and Associated Cameras** tab of the Access Control system integration properties.

### Trial license

For the following products, XProtect Access offers a 30-day trial license for all newly added doors:

- XProtect Corporate
- XProtect Expert
- XProtect Professional+
- XProtect Express+

For the following products, XProtect Access offers a 30-day trial license for up to three doors:

- XProtect Professional
- XProtect Express

### Unlicensed doors

Unlicensed doors stay in your system, but you:

- Will not see events and status from unlicensed doors
- Cannot lock, unlock, or perform other commands on unlicensed doors

## Installation

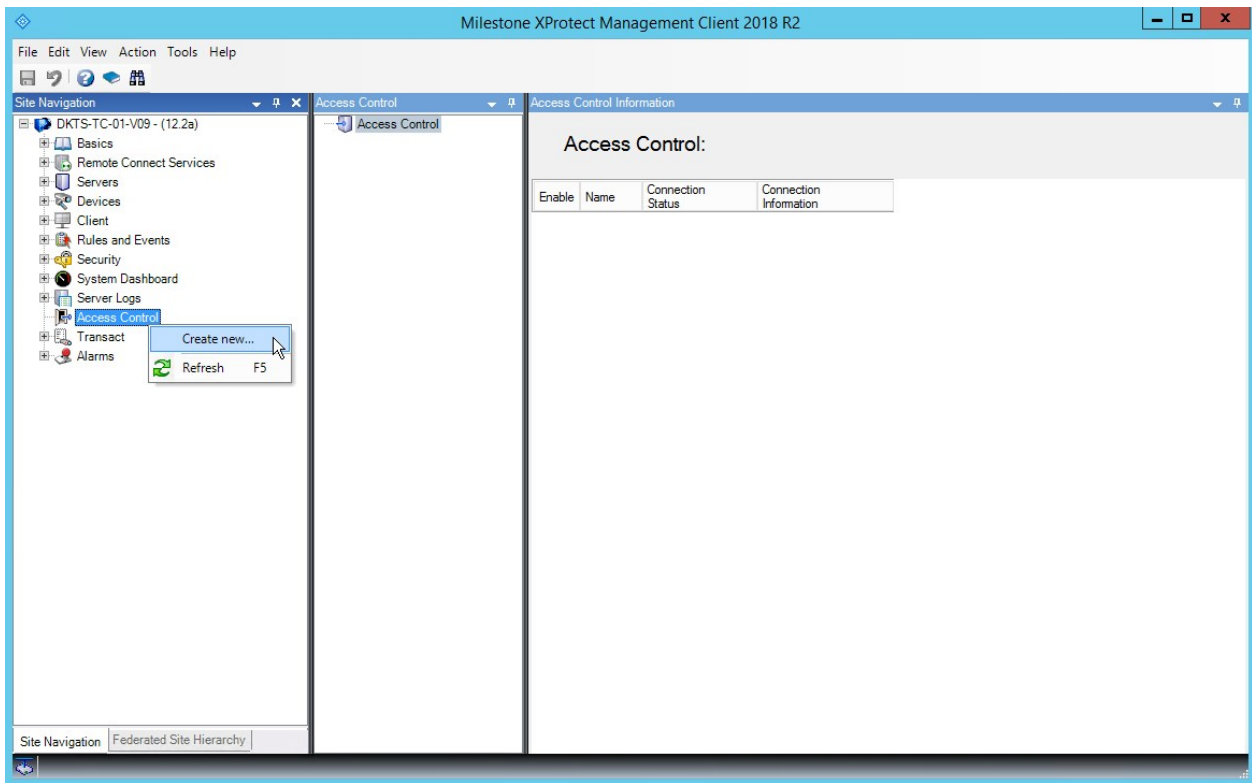
### Install the AXIS A1001 plug-in

On the computer that hosts your XProtect Event Server:

1. [Download](#) and run MilestoneXProtectAccessAXISA1001NetworkDoorControllerPluginInstaller.exe.
2. Follow the on-screen instructions to install the AXIS A1001 plug-in.
3. Restart your XProtect Event Server.

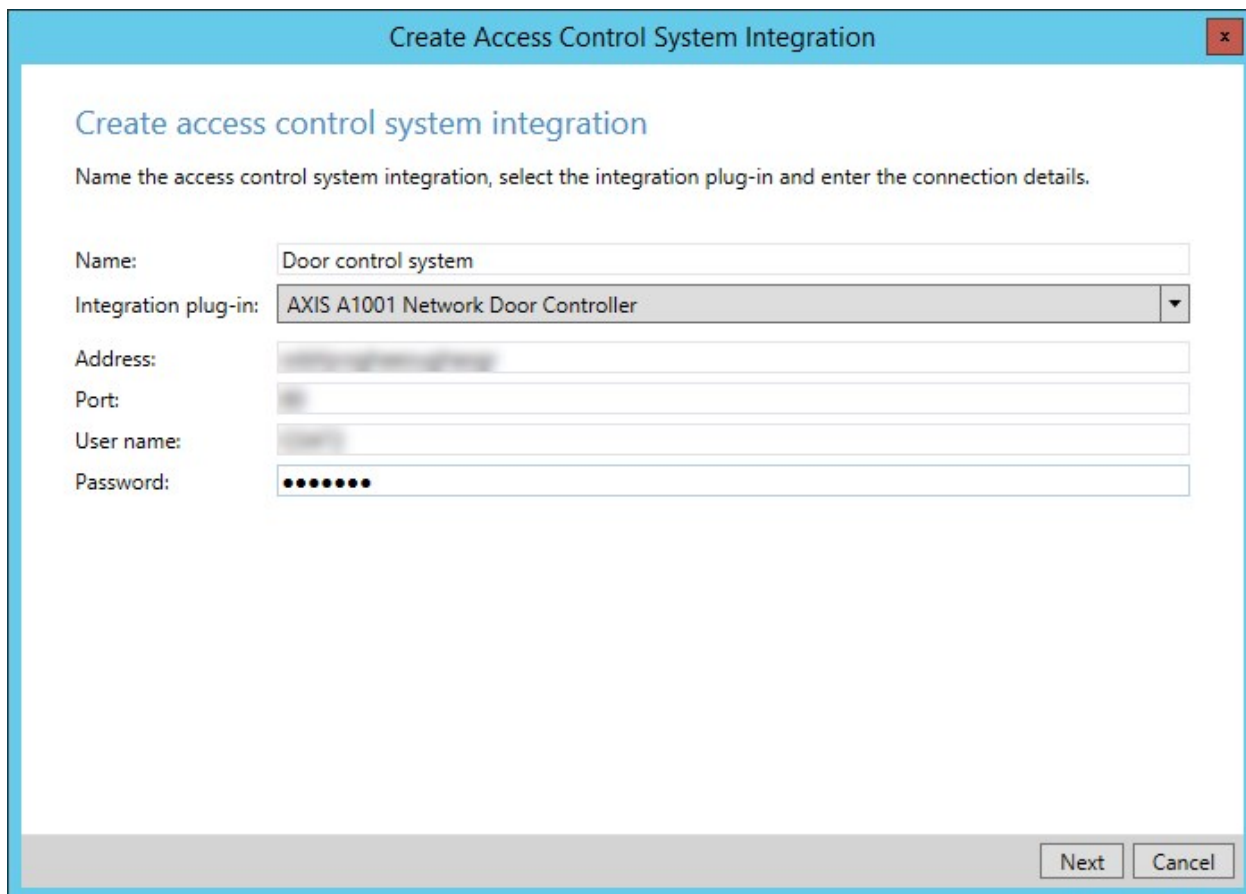
## Configuration

### Integrate the AXIS A1001 system with your Management Client or Management Application




In your Management Client or Management Application:

1. Right-click **Access Control**.
2. Select **Create new** to create a new integration. A dialog box appears.




In the **Create access control system integration** dialog box:

1. In the **Name** field, enter a name for your access control system.
2. In the **Integration plug-in** field, select **AXIS A1001 Network Door Controller**.
3. In the **Address** field, enter the network address of your AXIS A1001 system.

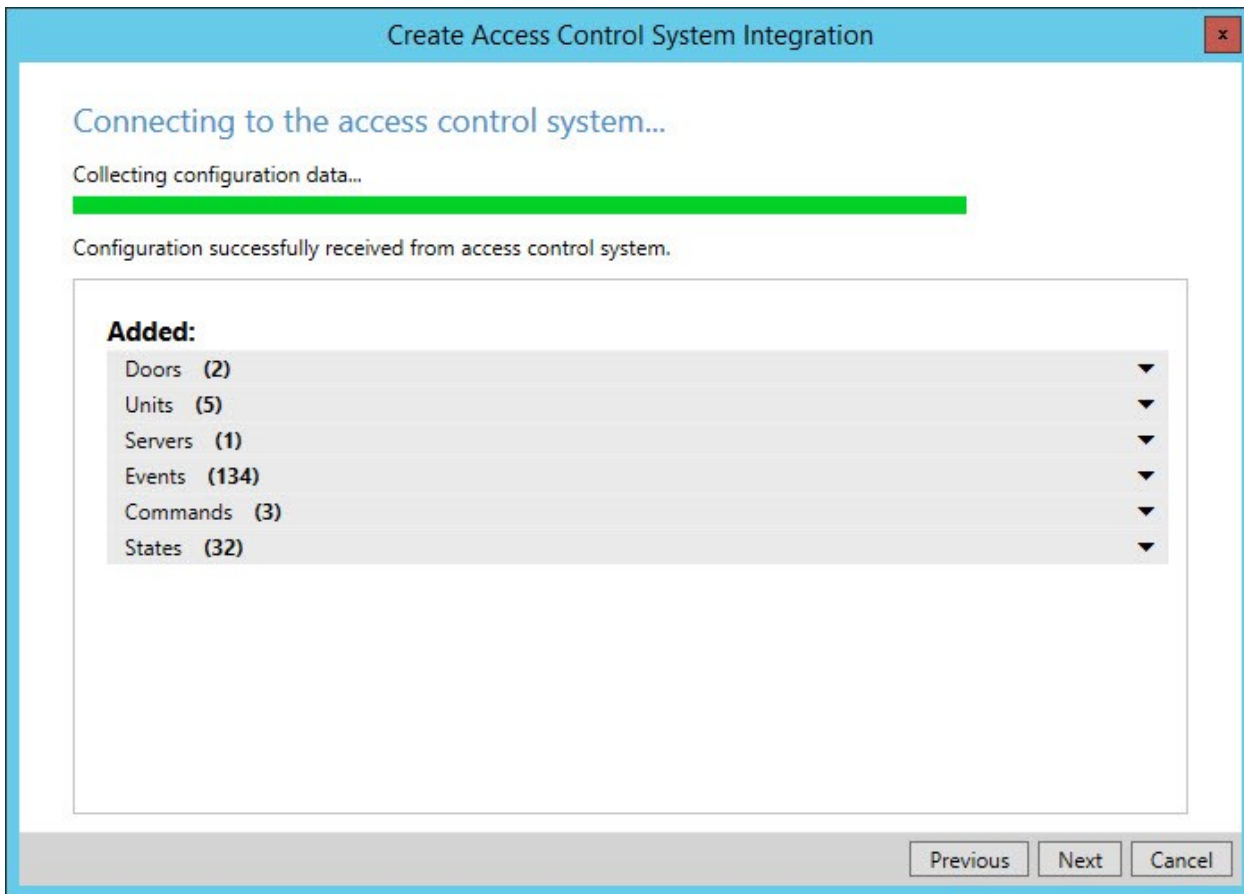
 If your system is connected to more than one AXIS A1001 system, select one connection to represent your whole system.

4. In the **Port** field, enter the network port for your AXIS A1001 system.
5. In the **User name** and **Password** fields, enter your login information.

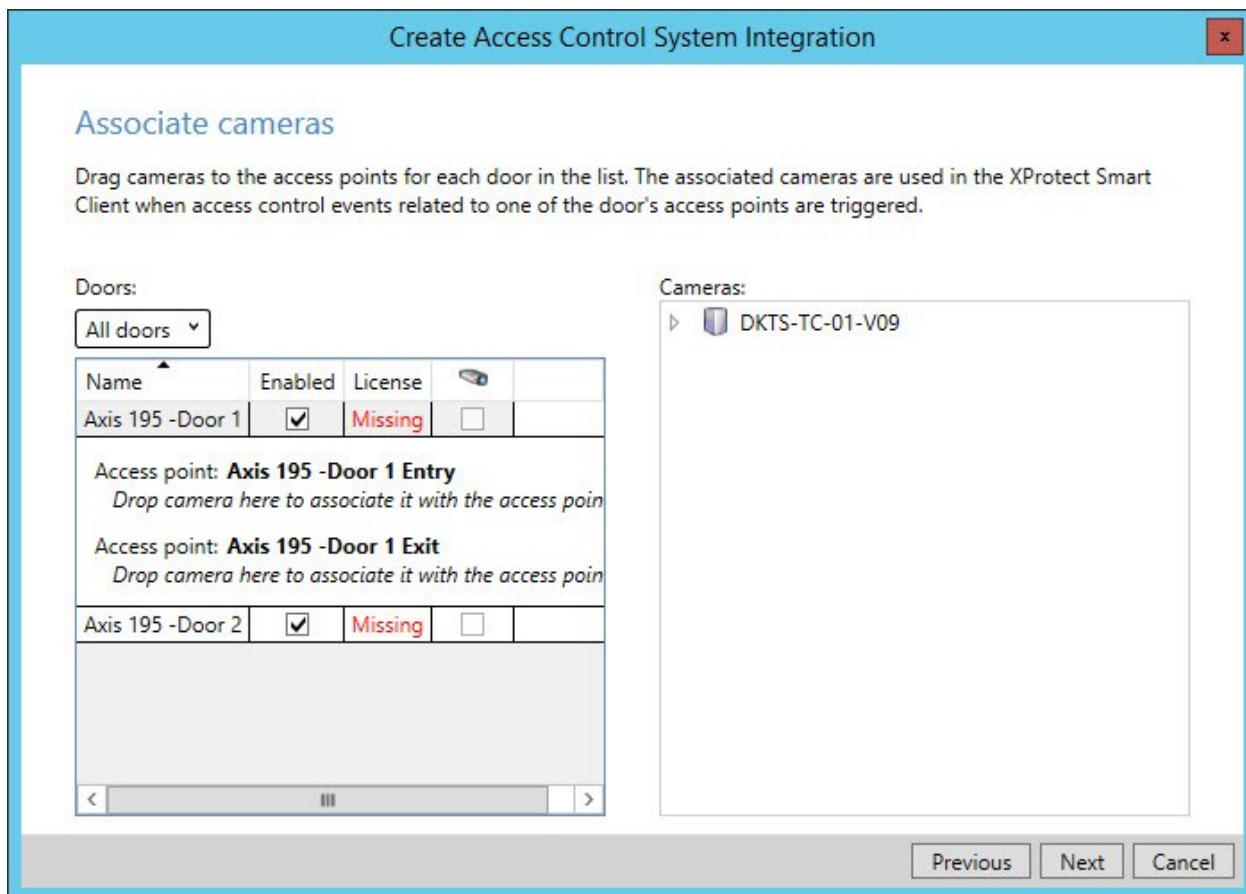
 In a system with multiple connected AXIS A1001 systems, the same user name and password will be used for all controllers in the system.

6. Select **Next**.






In the **Connecting to the access control system** dialog box, your XProtect Event Server collects doors and other entities. Select **Next**.




In the **Associate cameras** dialog box:

1. In the **Cameras** pane, select a camera and drag it to an access point in the **Doors** pane.

 This step is optional. You can make and change camera associations later.

2. Select **Next** to complete the integration.

The AXIS A1001 plug-in is now integrated with your XProtect Event Server, and the XProtect Access functionality is enabled in the XProtect VMS system.

 Configure doors, users, access rights, and schedules via the AXIS Entry Manager by using the built-in AXIS A1001 software. For more information, see the AXIS Communications website (<https://www.axis.com/products/axis-entry-manager>).

## Advanced configuration



*"What are some examples of advanced tasks that I can perform with the AXIS A1001 plug-in?"*

You can:

- Select and categorize events retrieved from the access control system
- Remap cameras to access points
- Configure actions associated with access control system events

## Update configuration



*"I've added a new door, and I've also removed and renamed other doors. What do I do next?"*

After you make changes to your access control system, you need to update the configuration of your integration.

In your Management Client or Management Application:

1. Select **Access Control**.
2. Your access control integrations appear as nodes below **Access Control**. Select the integration that you want to update.
3. On the **General Settings** tab, click **Refresh Configuration**. Your XProtect Event Server plug-in collects added, changed, and removed items from your access control system.
4. Select **Apply** to update the configuration of your integration.

## Maintenance

### Uninstall the AXIS A1001 plug-in

On the computer that hosts your XProtect Event Server:

1. In Management Client or Management Application, delete all AXIS A1001 plug-in integrations.
2. In Windows 10:
  1. Select the **Start menu**.
  2. Select **Settings**.
  3. Select **Apps**. You will see a list of all installed apps.
  4. Find and select **XProtect Access AXIS A1001 Network Door Controller Plug-in**.
  5. Select **Uninstall**.
  6. Follow the on-screen instructions to uninstall the AXIS A1001 plug-in.

### About Milestone

Milestone Systems is a leading provider of open platform video management software; technology that helps the world see how to ensure safety, protect assets and increase business efficiency. Milestone Systems enables an open platform community that drives collaboration and innovation in the development and use of network video technology, with reliable and scalable solutions that are proven in more than 150,000 sites worldwide. Founded in 1998, Milestone Systems is a stand-alone company in the Canon Group. For more information, visit <https://www.milestonesys.com/>.